


Child's Play

Designs
For Tots
To Tweens



Design by
AMY MARSHALL

Fleur Dress

Skill Level  INTERMEDIATE

Sizes

Infant's 3-6 (6-12, 12-18, 18-24) months Instructions are given for smallest size, with larger sizes in parentheses. When only 1 number is given, it applies to all sizes.

Finished Measurements

Chest: 20 $\frac{3}{4}$ (22 $\frac{1}{2}$, 24, 25 $\frac{1}{2}$) inches
Length: 14 $\frac{3}{4}$ (16, 17 $\frac{3}{4}$, 19 $\frac{1}{2}$) inches

Materials

- DK weight yarn (137 yds/50g per ball): 2 balls light yellow #1651 (MC); 1 ball each light denim #1791 (A), bright light blue #1472 (B), light blue #1462 (C), kelly green #1727 (D)
- Size 6 (4mm) double-point (set of 4), 16- and 29-inch circular needles or size needed to obtain gauge
- Size F/5 (3.75mm) crochet hook
- Stitch markers, 1 in CC for beg of rnd
- Bobbins (optional)

*Sample project was completed with Zara (100% merino wool) from Filatura Di Crosa.

Gauge

20 sts and 28 rnds = 4 inches/10cm in St st.

To save time, take time to check gauge.



If you love intarsia, you'll find this irresistible design a joy to create.

Special Abbreviations

Place marker (pm): Place a marker on needle to separate sections.

Slip marker (sm): Slip marker from LH needle to RH needle.

Make 1 (M1): Insert LH needle from front to back under horizontal thread between last st worked and next st on RH needle; k1-tbl.

Pattern Stitches

Stripe Sequence

*Knit 2 rnds A, 2 rnds B, 2 rnds C; rep from * as necessary.

Flower (40-st panel)

See chart.

Pattern Notes

This dress is worked in the round from bottom to the armholes, and then front and back are separated and worked back and forth in rows. The short sleeves begin in the round with cap worked back and forth in rows.

To minimize the color jog between stripes, before beginning the second round of a new color, pick up the stitch in the row below the first stitch of the round (it will be the old color) and place it on the left needle; knit it together with the first stitch of the round.

When working Flower pattern, use intarsia technique, with a separate length of yarn for each colored section; bring new color up from under old color to interlock them. Put lengths of yarn on bobbins, if desired.

Body

With longer circular needle and D, cast on 136 (144, 152, 160) sts; pm for beg of rnd; join, taking care not to twist sts.

Work in k2, p2, rib for 1 inch.

Beg Stripe Sequence

Next rnd: Change to A and St st; *k23 (24, 25, 26), pm, k22 (24, 26, 28), pm, k23 (24, 25, 26); rep from * once more.

Work 1 more rnd A.

Continue with Stripe Sequence until piece measures 2 $\frac{1}{4}$ (2 $\frac{1}{4}$, 2 $\frac{3}{4}$, 3) inches.

Dec rnd: Maintaining Stripe Sequence, *k2, ssk, work to marker, sm; k2, ssk, [work to 4 sts before next marker, k2tog, k2, sm] twice; rep from * once more—128 (136, 144, 152) sts.

Maintain Stripe Sequence and rep Dec rnd [every 14 (16, 18, 20) rnds] 3 times—104 (112, 120, 128) sts.

Change to MC and work even in St st until piece measures 10 (11, 12 $\frac{1}{2}$, 14) inches.

Place last 52 (56, 60, 64) sts on waste yarn for back.

Front

Row 1 (RS): Bind off 2 sts, knit to end, removing markers—50 (54, 58, 62) sts.

Row 2: Bind off 2 sts, p4 (6, 8, 10) [including st from bind-off], pm, purl to last 4 (6, 8, 10) sts, pm, purl to end—48 (52, 56, 60) sts.

Dec row (RS): Beg working Flower chart between markers and at the same time, dec as follows: k2, ssk, work to last 4 sts, k2tog, k2—46 (50, 54, 58) sts.

Rep Dec row [every RS row] 2 (2, 2, 3) times—44 (48, 50, 52) sts.

Work even until armhole measures 2 $\frac{1}{4}$ (3, 3 $\frac{1}{4}$) inches, ending with a WS row.



Note: When chart is complete, continue in St st with MC.

Shape neck

Next row (RS): Work 15 (16, 17, 18) sts; join 2nd ball of yarn and bind off center 14 (16, 16, 16) sts, work to end of row.

Working both sides at once with separate balls of yarn, purl 1 row.

Dec row (RS): Knit to last 4 sts before neck, k2tog, k2; k2, ssk, knit to end—14 (15, 16, 17) sts on each side.

Rep Dec row [every RS row] 4 times—10 (11, 12, 13) sts.

Work even until armhole measures 4¾ (5, 5¼, 5½) inches.

Put rem sts on waste yarn.

Back

Transfer back sts to needle with RS facing; join yarn.

Bind off 2 sts at beg of next 2 rows—48 (52, 56, 60) sts.

Dec row (RS): K2, ssk, work to last 4 sts, k2tog, k2—46 (50, 54, 58) sts.

Rep Dec row [every RS row] 2 (2, 2, 3) times—44 (48, 50, 52) sts.

Work even in St st until armhole measures 4 (4¼, 4½, 4¾) inches, ending with a WS row.

Shape neck

Next row (RS): Work 14 (15, 16, 17) sts, join 2nd ball of yarn and bind off center 16 (18, 18, 18) sts, work to end of row.

Working both sides at once with separate balls of yarn.

Dec row (WS): Purl to 4 sts before neck, p2tog, p2; p2, ssp, purl to end—13 (14, 15, 16) sts each side.

Dec row (RS): Knit to 4 sts before neck, ssk, k2; k2, k2tog, knit to end—12 (13, 14, 15) sts each side.

Rep last 2 rows once more—10 (11, 12, 13) sts on each side.

COLOR KEY	
	Light yellow (MC)
	Light denim (A)
	Bright light blue (B)
	Kelly green (D)

Work even until armhole measures 4¾ (5, 5¼, 5½) inches.

Put rem sts on waste yarn.

Sleeves

With dpns and MC, cast on 36 (36, 40, 40) sts; pm for beg of rnd and join, taking care not to twist sts.

Work 3 rnds in k2, p2, rib.

Inc rnd: K2, M1, knit to last 2 sts, M1, k2—38 (40, 42, 42) sts.

Rep Inc rnd [every other rnd] 1 (2, 1, 2) more time(s)—40 (42, 44, 46) sts.

Work even until piece measures 1 inch.

Shape cap

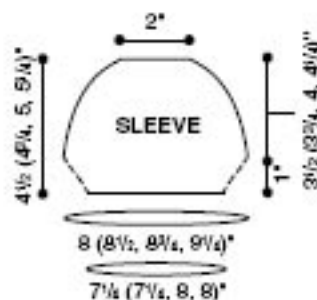
Beg working back and forth.

Bind off 2 sts at beg of next 2 rows—36 (38, 40, 42) sts.

Dec row (RS): K2, ssk, knit to last 4 sts, k2tog, k2—34 (36, 38, 40) sts.

Rep Dec row [every RS row] 9 (10, 11, 12) times then [every row] 3 times—10 sts.

Bind off.



Finishing

Join shoulder seams with 3-needle bind-off, page 109.

Block pieces to finished measurements.

Neckband

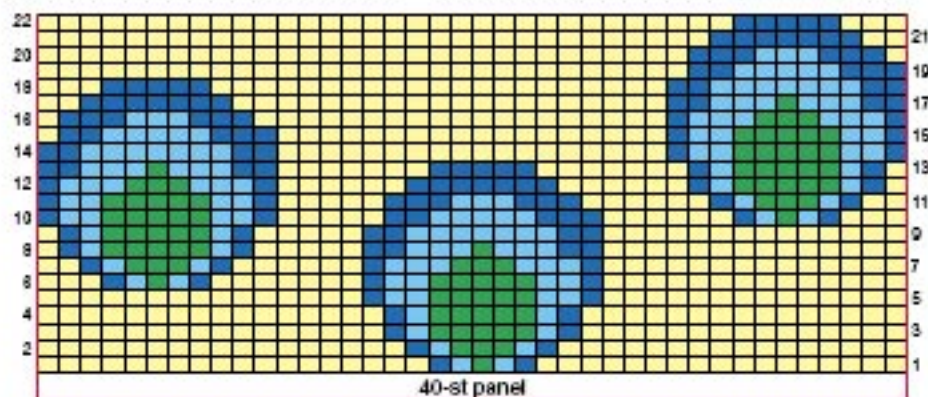
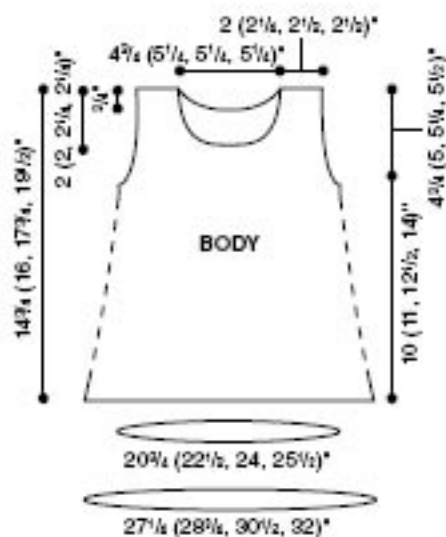
With RS facing and using shorter needle and MC, pick up and knit 64 (68, 72, 72) sts evenly around neck opening; pm for beg of rnd and join.

Work k2, p2, rib for ½ inch. Bind off loosely in rib.

Sew sleeves to body.

Trim

Using green yarn held under knitted dress, crochet the chain stitch stem and leaves with a chain stitch (see photo). ■



FLOWER CHART

Design by
SILKA BURGOWNE

Tank Dress

Skill Level ■■■■ □
INTERMEDIATE

Sizes

Child's 2 (4, 6, 8) Instructions are given for smallest size, with larger sizes in parentheses. When only 1 number is given, it applies to all sizes.

Finished Measurements

Chest: 22¼ (24, 25¼, 27½) inches
Waist: Approx 21 (22, 24, 26) inches (slightly stretched)
Length: 17½ (19¼, 21¼, 23¼) inches

Materials

- Worsted weight yarn* (77 yds/50g per ball): 5 (6, 6, 6) balls abbey rose #46 (MC), 2 skeins orange #45 (CC)
- Size 5 (3.75mm) 16- and 24-inch circular needles
- Size 6 (4mm) 16- and 24-inch circular needles or size needed to obtain gauge
- Size F/5 (3.75mm) crochet hook
- Stitch markers
- Stitch holders



*Sample project was completed with America's Best Article 940 (100% mercerized cabled perle cotton) from Pisgah Yarn & Dyeing Co.

Gauge

18 sts and 26 rnds = 4 inches/10cm in St st with larger needles (lightly blocked). To save time, take time to check gauge.

Pattern Stitches

Garter St (worked in rnds)

Rnd 1: Knit around.

Rnd 2: Purl around.

Rep Rnds 1 and 2 for pat.

Twisted Rib

 (even number of sts)

Rnd 1: *K1-tbl, p1; rep from * around. Rep Rnd 1 for pat.

Pattern Notes

Dress is worked in 1 piece to the armholes, and then divided for front and back yokes.

Dress is intended to be semi-fitted with approximately 1–2 inches of ease.

Border

With larger needle and CC, cast on 144 (160, 172, 180) sts, mark beg of rnd and join without twisting.

Change to smaller needle and MC, work Garter St in rnds until border measures 1½ inches from beg, ending with a purl rnd and placing a marker after 72 (80, 86, 90) sts.

Change to CC and knit 1 rnd.

Next rnd: Change to MC and purl 1 rnd.

Body

Work in MC and St st until body measures 9½ (10, 10½, 11½) inches from beg.

Dec rnd: With CC, *dec 22 (26, 28, 28) sts evenly between first and 2nd markers; rep from * between 2nd marker and end of rnd—100 (108, 116, 124) sts rem.

Waist

Change to smaller needle and MC, purl 1 rnd.

Beg working in Twisted Rib, working 3 rnds MC, 2 rnds CC, 3 rnds MC, and 1 rnd CC. Change to MC and purl 1 rnd.

Bodice

Change to larger needle and St st, working *2 rnds MC, 5 rnds CC; rep from * for stripe pat.

Work in pat until bodice measures 3 (3½, 4, 4½) inches from top purl rnd of waist shaping.

Divide front & back

Knit to marker, slip marker, put next 50 (54, 58, 62) sts on a spare needle or waste yarn for front. Work 50 (54, 58, 62) sts just worked for back.

Beg with a WS row, bind off 3 sts at beg of next 2 rows, then dec 1 st at each armhole edge by p1, p2tog, purl to last 3 sts, ssp [every WS row] 2 (2, 3, 4) times—40 (44, 46, 48) sts.

Work even until armhole measures 4¼ (4½, 5, 5½) inches. Work 8 (9, 9, 9) sts, bind off center 24 (26, 28, 30) sts, work rem sts—8 (9, 9, 9) sts on each shoulder.

Put shoulder sts on holders.

Front

Transfer 50 (54, 58, 62) sts to larger needle. With RS facing and maintaining pat, attach yarn and bind off 3 sts at beg of next 2 rows, then dec 1 st at armhole edge by k1, k2tog, knit to last 3 sts, ssk, k1 [every RS row] 2 (2, 3, 4) times—40 (44, 46, 48) sts.

Work even until front measures 4 (4½, 5, 5½) inches from top purl rnd of waist band, ending with a WS row.

Shape neck

Work 14 (16, 16, 16) sts, join 2nd ball of yarn and bind off center 12 (12, 14, 16) sts, work rem sts—14 (16, 16, 16) sts.

Tip Off

If you need help with single crochet and 3-needle bind-off, see pages 108 and 109.

Dressing up will always be fun in this two-tone cutie with pizzazz at the neckline.



Working both sides at once with separate balls, at each neck edge, [bind off 2 sts] once, then dec 1 st [every other row] 4 (5, 5, 5) times—8 (9, 9, 9) sts.

Work even until armhole measures same as back to shoulder.

Join front and back shoulders using 3-needle bind-off.

Armhole Edging

Note: If not familiar with single crochet st (sc), refer to CrochetClass on page 108. With MC and crochet hook, work sc around armhole edges.

Neckband

With smaller needle and MC, RS facing, beg at shoulder seam, pick up and knit 72 (78, 82, 86) sts around neck, place marker, join and work 4 rnds in Twisted Rib. Bind off in pat.

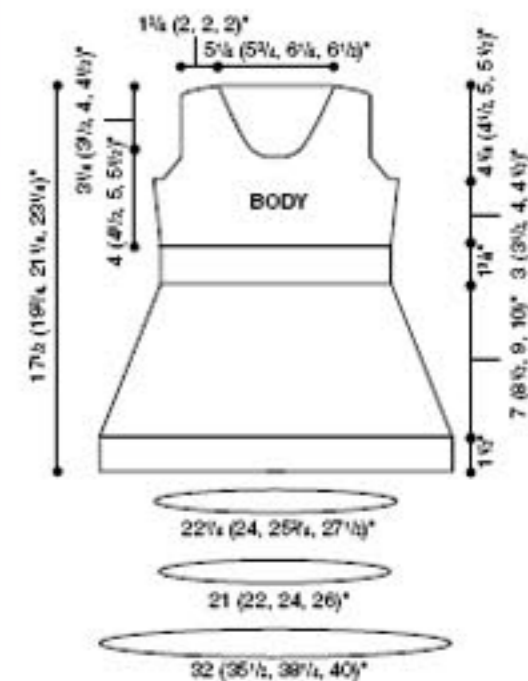
Neck Ruffle

With larger needle and MC, RS facing, beg at shoulder seam, pick up and knit 72 (78, 82, 86) sts around neck at base of ribbing.

Inc rnd: Change to smaller needle, knit in front and back of every st—144 (156, 164, 172) sts.

Work 4 more rnds even in St st, then change to CC and work 2 rnds. Bind off all sts.

Block to measurements. ■



Design by
LAURA NELKIN

A-dorable A-Line Ruffled Jumper

Skill Level  (EASY)

Sizes

Infant's 6–12 months (12–18 months, 2 years, 3 years) Instructions are given for smallest size, with larger sizes in parentheses. When only 1 number is given, it applies to all sizes.

Finished Measurements

Chest: 17¼ (20½, 22¼, 24) inches
Length: 14½ (17, 20, 22½) inches

Materials

- Worsted weight yarn (280 yds/4 oz per skein): 1 (1, 2, 2) skein(s) Sophia Smith
- Size 6 (4mm) 16-inch circular needle
- Size 7 (4.5mm) 16- and 24-inch circular needles or size needed to obtain gauge
- Stitch holders: 1 long, 2 short
- Stitch markers: 1 in CC for beg of rnd



*Sample project was completed in Miss Priss (100% merino wool) from Schaefer Yarn.

Gauge

18 sts and 28 rnds = 4 inches/10cm in Slip St pat with larger needles. To save time, take time to check gauge.

Pattern Stitch

Slip St (in rnds on multiple of 4 sts)

Rnd 1: *K3, sl 1p; rep from * around.

Rnd 2: Knit around.

Rep Rnds 1 and 2 for pat.

Slip St (in rows on multiple of 4 sts)

Row 1: *K3, sl 1p; rep from * across.

Row 2: Purl across.

Rep Rows 1 and 2 for pat.

Pattern Note

Change to 16-inch circular needle when stitches no longer fit comfortably on 24-inch circular needle.

Ruffle

With longer circular needle, cast on 232 (248, 264, 280) sts. Place marker for beg of rnd and join, taking care not to twist sts.

Rnd 1: *Ssk, [yo] twice, k2tog; rep from * around.

Rnd 2: *K1, [k1, p1] in double-yo, k1; rep from * around.

Rep [Rnds 1 and 2] 3 times.

Next rnd: *[K2tog] 28 (30, 32, 34) times, k2; rep from * around—120 (128, 136, 144) sts.

Next rnd: K60 (64, 68, 72), place marker for side seam, knit to end of rnd.

Body

Work 5 (7, 9, 9) rnds in Slip St pat.

Dec rnd: *K1, ssk, work in pat to 3 sts before marker, k2tog, k1, slip marker; rep from * once—116 (124, 132, 140) sts.

Continue working established pat and rep Dec rnd [every 10 rnds] 0 (0, 1, 8) time(s), [every 8 rnds] 0 (3, 6, 0) times, [every 6 rnds] 3 (5, 1, 0) time(s) and [every 4 rnds] 6 (0, 0, 0) times—80 (92, 100, 108) sts.

Work even in established pat until piece measures 9¼ (11½, 13½, 15½) inches from cast-on edge, ending with Rnd 1.

Divide for armholes

Next rnd: Removing markers, k36 (42, 46, 50), bind off 7 sts (1 st rem on RH needle), k32 (38, 42, 46) and place these 33 (39, 43, 47) sts on holder for front, bind off 7 sts—33 (39, 43, 47) sts rem for back.

Back

Row 1 (RS): Work in Slip St pat across.

Row 2: Purl across.

Dec row: K1, ssk, work in pat to last 3 sts, k2tog, k1—31 (37, 41, 45) sts.

Continuing in established pat, work Dec row [every 4 rows] 2 (3, 3, 3) more times—27 (31, 35, 39) sts.

Work even until armholes measure 3¾ (4½, 5½, 6) inches, ending with a WS row.

Shape neck

Row 1 (RS): Work in pat across 5 (6, 7, 8) sts, place center 17 (19, 21, 23) sts on a holder, join a 2nd skein of yarn and work in pat across rem sts.

Row 2: Working both shoulders at once with separate skeins of yarn, purl across.

Row 3: Work in pat to 3 sts before neck, k2tog, k1; k1, ssk, work to end of row—4 (5, 6, 7) sts on each side.

Work in pat until armholes measure 4¾ (5½, 6½, 7) inches, then place shoulder sts on holders.

Front

Place front sts from holder on larger needle. Work as for back until armholes measure 1¼ (2, 3, 3½) inches, ending with a WS row.

Shape neck

Row 1 (RS): Work in pat across 7 (8, 10, 11) sts, place center 13 (15, 15, 17) sts on a holder, join a 2nd skein of yarn and work in pat across rem sts.

Row 2: Working both shoulders at once with separate skeins of yarn, purl across.

Row 3: Work to 3 sts before neck, k2tog, k1; k1, ssk, work to end of row—6 (7, 9, 10) sts on each side.

Rep [Rows 2 and 3] 2 (2, 3, 3) times—4 (5, 6, 7) sts on each side.

Work even in pat until armholes measure same as for back.

Finishing

Join front and back shoulders tog using Kitchener st, page 109. Sew side seams.

Armhole edging

With smaller needle, pick up and knit 52 (62, 76, 86) sts around armhole. Place marker for beg of rnd and join.

Purl 1 rnd. Bind off.

Rep for other armhole.

Neck edging

With smaller needle, pick up and knit 10 (10, 11, 11) sts along right front edge, knit sts from front holder, pick up and knit 10 (10, 11, 11) sts along left front neck, 6 sts along left back neck, knit sts from back holder, then pick up and knit 6 sts along right back neck—62 (66, 70, 74) sts.

Place marker for beg of rnd and join. Purl 1 rnd. Bind off.

Block to measurements. ■



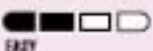
This jumper is all a girl can ask for: beautiful, soft and so cuddly warm.



Design by
LORNA MISER

Circular- Yoke Cardigan

Self-striping
yarn makes the
patterning extra
easy in this
everyday fun cardi.

Skill Level  EASY

Sizes

Girls 2 (4, 6, 8) Instructions are given for smallest size, with larger sizes in parentheses. When only 1 number is given, it applies to all sizes.

Finished Measurements

Chest: 24 (26, 28, 30) inches
Length: 14 (15½, 16, 17½) inches

Materials

- Worsted weight yarn* (68 yds/42g per ball):
5 (6, 7, 8) balls pinky stripes #21732
- Size 7 (4.5mm) 24-inch circular and double-point needles or size needed to obtain gauge
- Safety pins
- 1 (1¾-inch) button* #2213

*Sample project was completed with Handicrafter Cotton Stripes (100% cotton) from Bernat Yarns and button from JHB International.



Gauge

18 sts and 24 rows = 4 inches/10cm in St st.
To save time, take time to check gauge.

Pattern Note

Lower body is knit in 1 piece in stockinette stitch, beginning at the left center front and working around the body to the right center front, and then bound off. The sleeves are worked sideways in the same manner with the first and last row knit together using a 3-needle bind-off seam. Edgings are then worked on the hems. Once both sleeves and

lower body are finished, stitches are picked up along the top edge, and the yoke is worked back and forth in garter stitch (knit every row) with a buttonhole and decreases to form the neck.

Lower Body

With circular needle, cast on 36 (40, 41, 45) sts. Do not join, work back and forth in rows. Knit 4 rows for front edging then change to St st and work even for 6 (6½, 7, 7½) inches, place marker at LH edge for underarm location, continue in St st until body measures 12 (13, 14, 15) inches from marker, place another marker, continue in St st until body measures 6 (6½, 7, 7½) inches from 2nd marker. Work 4 rows garter st. Bind off kwise.

Edging

Pick up and knit approximately 108 (117, 126, 135) sts across bottom edge. Knit 4 rows. Bind off kwise.

Sleeves

Using provisional cast-on (optional), cast on 38 (47, 52, 56) sts. Work in St st for 8 (8, 9, 9½) inches. Using 3-needle bind-off, join first row to last, or sew cast-on edge to bound-off edge. Using dpn, pick up and knit 36 (36, 40, 42) sts along bottom edge of sleeve. *Knit 1 rd. Purl 1 rd. Rep from * once. Bind off kwise.
Using safety pins, pin underarm seam of sleeve

to 1 marker on body, RS tog, hanging as if to be worn. Using safety pins, pin 2nd underarm seam to 2nd underarm marker. Measure 1 inch on each side of markers. Remove original pin location and pin at 2 places for each underarm. These sections will be sewn closed later.

Yoke

Yoke is worked in garter st. Beg at right front edge, RS facing, pick up and knit 22 (24, 27, 29) sts across right front to first pin, 27 (27, 32, 34) sts around sleeve to 2nd pin, 45 (48, 54, 58) sts across back to 3rd pin, 27 (27, 32, 34) sts around sleeve to 4th pin and 22 (24, 27, 29) sts across left front to center—143 (150, 172, 184) sts.

Knit every row until yoke measures 3 (¾, 3½, 3¾) inches.

Next RS row: *K1, k2tog; rep from * across, end k2 (0, 1, 1)—96 (100, 115, 123) sts.

Knit 7 rows.

Next RS row: *K1, k2tog; rep from * across, end k0 (1, 1, 0)—64 (67, 77, 82) sts.

Knit 3 rows.

Buttonhole row: K2, bind off 2 sts, knit to end.

Next row: Knit, casting on 2 sts over bound-off sts.

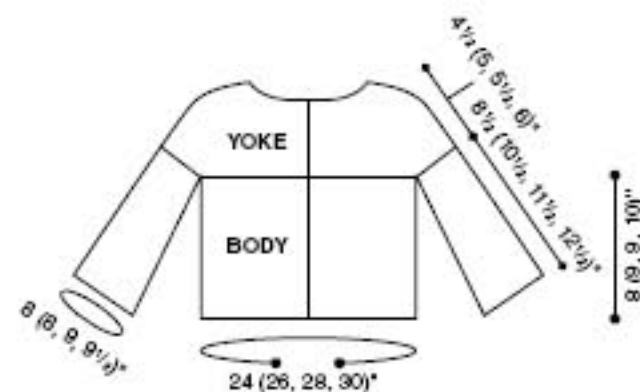
Knit 3 rows.

Bind off kwise.

Sew underarms closed. Sew button on left front to correspond with buttonhole. Block to measurements. ■

Tip Off

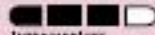
For instructions on provisional cast-on and 3-needle bind-off, see page 109.



Designs by
ANN E. SMITH

A Little Star for Dolly & Me

Little girls will look picture-perfect, and so will their 18-inch dolls.

Skill Level  INTERMEDIATE

Girl's Dress Size

Girl's 2 (4, 6, 8) Instructions are given for smallest size, with larger sizes in parentheses. When only 1 number is given, it applies to all sizes.

Finished Measurements

Chest: 24 (25½, 28, 29½) inches
Length: 17½ (20, 24, 25½) inches

Doll's Dress

Size: To fit 17–18-inch doll

Materials

- Worsted weight yarn* (168 yds/2½ oz per skein): 3 (4, 5, 6) skeins fuchsia #146 (MC); 2 skeins each lime #194 (A), mango #186 (B), turquoise #148 (C)
- Size 6 (4mm) 16-inch circular needle
- Size 7 (4.5mm) 16-inch circular needle or size needed to obtain gauge
- Stitch markers
- Stitch holders
- Buttons: 1 (¾-inch) for girl's purse; 1 (½-inch) for doll's purse



*Sample project was completed with Microspun (100% microfiber acrylic) from Lion Brand Yarn Co.

Gauge

20 sts = 4 inches/10cm in St st with larger needles.
23 sts = 4 inches/10cm in Star Tweed pat with larger needles.
To save time, take time to check gauge.

Special Abbreviation

Star stitch (star st): Sl 1 p wyib, k1 in running thread between sl st and next st, slip next st pwise wyib, k1, pass first sl st (4th st from end of RH needle) over last 3 sts on RH needle.

Pattern Stitches

Seed St (odd number of sts)
Row 1 (WS): P1, *k1, p1; rep from * across.
Row 2: Knit the purl sts and purl the knit sts.
Rep Row 2 for pat.

Star Tweed (multiple of 4 sts + 5)
Row 1 (RS): With MC, k1, *star st, k1; rep from * across.
Row 2: Purl, drop MC at end of row.
Row 3: With A, k3, *Star St, k1; rep from * across to last 2 sts, end k2.
Row 4: Purl, drop A at end of row.
Rows 5 and 6: Rep Rows 1 and 2.
Rows 7 and 8: With C, rep Rows 3 and 4.
Rows 9 and 10: Rep Rows 1 and 2.
Rows 11 and 12: With B, rep Rows 3 and 4.
Rep Rows 1–12 for pat.

Pattern Notes

Do not cut dropped yarns unless stated otherwise. Carry loosely along edge.
When shaping armholes and neck, work any partial repeats of pattern at edges in stockinette stitch.

Yarn amounts given are sufficient to make girl's and doll's outfits.
Circular needle is used to accommodate stitches, do not join. Work back and forth in rows.

Girl's Dress

Back

Skirt
Beg at bottom with MC and smaller needles, cast on 121 (127, 141, 149) sts.
Rows 1 (WS)–6: Work in Seed St.
Change to larger circular needle.
Row 7: Purl across, dec 1 (0, 0, 1) st(s)—120 (127, 141, 148) sts.
Beg with a knit row, work even in St st until back measures 7½ (8, 8½, 9) inches from beg, ending with a WS row.
Dec row (RS): K1, *[k2tog] 3 times, k1; rep from * across—69 (73, 81, 85) sts.
Next row: Purl across.

Bodice

Beg with Row 1 of Star Tweed pat, work in pat until bodice measures 4½ (6, 9, 9½) inches from top of skirt.

Shape armhole

Rows 1–6: Bind off 4 sts, work in pat across—45 (49, 57, 61) sts at end of Row 6.

Work in established pat until bodice measures 7 (9, 12½, 13½) inches from top of skirt, ending with a Row 1, 5 or 9.

Shape neck

Row 1 (WS): For first shoulder, with MC, p9 (9, 13, 13) sts; attach 2nd skein of MC, bind off next 27 (31, 31, 35) sts for neck; for 2nd shoulder, purl to end—9 (9, 13, 13) sts for each shoulder.

Working on both shoulders at once and attaching 2nd ball of each color as necessary, work in pat on both shoulders until bodice measures 10 (12, 15½, 16½) inches from top of skirt, ending with a Row 1, 5 or 9.

Bind off kwise.

Front

Work as for back.

Assembly

Sew bound-off shoulder sts tog.

Neckband

With MC and smaller needle, RS facing, beg at shoulder seam, pick up and knit *19 sts along neck edge, 26 (30, 30, 34) sts across bound-off sts, 19 sts along neck edge to next shoulder seam; rep from * once more, place marker for beg of rnd—128 (136, 136, 144) sts.
Join and knit 2 rnds.
Bind off pwise.

Armbands

With MC and smaller needle, RS facing, beg at underarm, pick up and knit 36 (39, 42, 45) sts evenly to shoulder seam, 36 (39, 42, 45) sts evenly from shoulder seam to other underarm, do not join—72 (78, 84, 90) sts.
Rows 1 and 2: Knit across, turn.
Bind off kwise.
Matching ends of rows, sew side seam from cast-on to armband bind-off.

Girl's Bag

Center Panel

Row 1: With larger needles and MC, cast on 37 sts.
Rows 2–12: Work Rows 2–12 of Star Tweed pat.
Rows 13–72: Rep [Rows 1–12 of pat] 5 times.



Rows 73 and 74: Rep Rows 1 and 2.
Bind off kwise.

Side Panel

With MC and larger needles, RS of center panel facing, pick up and knit 57 sts evenly across 1 edge.

Rows 1–3: Knit across.

Bind off kwise.

Rep for other side.

Fold center panel in half along Row 37. Matching corners of 1 side panel, sew bound-off sts tog from ends of rows to fold.

Rep for other side.

Top Band

Row 1: With MC and larger needles, RS facing, beg and ending at side seams, pick up and knit 43 sts evenly across 1 edge of purse.

Rows 2 and 3: Knit across.

Bind off kwise.

Flap

Row 1: Pick up and knit 43 sts across other edge of purse as for band.

Row 2: Knit across.

Rows 3–12: Bind off 1 st, knit across—33 sts rem at end of Row 12.

Row 13: Bind off 1 st, k15, yo, k2tog (buttonhole), k14—32 sts.

Rows 14–16: Bind off 1 st, knit across—29 sts rem at end of Row 16.

Bind off kwise.

Fold flap over front, sew larger button on center panel to match buttonhole.

Strap

Row 1: With MC and larger needles, cast on 220 sts.

Bind off kwise. Being careful not to twist strap, sew ends to top of purse side seams.

Doll's Dress

Skirt

Beg at bottom with MC and smaller needles, cast on 87 sts.

Work 2 rows in Seed St.

Change to larger needles and work even in St st until dress measures 3 inches from cast-on, ending with a WS row.

Dec row (RS): [K2tog] twice, *k1, k2tog; rep from * to last 2 sts, end k2tog—57 sts.

Next row: Purl across.

Bodice

Beg with Row 1 of Star Tweed pat, work in pat until dress measures 8 inches from beg, ending with a Row 1, 5 or 9.

Right Back

Row 1 (WS): P13; bind off 1 st for underarm. Turn, leaving rem 43 sts unworked.

Work in established pat on 13 sts until armhole measures 2 inches, ending with a Row 1, 5 or 9.

Next row: P9, place on holder for neck, p4.

Bind off rem 4 sts.

Front

With WS facing, attach MC, p29, turn, leaving rem 14 sts unworked.

Work in pat on 29 sts until front matches back, ending with same pat row.

Next row: Bind off 4 sts, p21 (neck), bind off last 4 sts. Slip neck sts on same holder.

Left Back

With WS facing, attach MC, bind off 1 st, purl to end—13 sts.

Work in pat until left back is same length as right back, ending with same pat row.

Next row: Bind off 4 sts, p9. Slip neck sts on same holder.

Sew shoulder seams.

Neckband

With MC and smaller circular needle, RS facing, slip 39 neck sts onto needle, bind off kwise.

Buttonhole band

On right back with MC and smaller circular needle, RS facing and beg at neck edge, pick up and knit 31 sts evenly to top of skirt, and 18 sts to cast-on edge of skirt—49 sts.

Rows 1 (WS) and 2: Work in Seed St.

Row 3: Work 1 st in Seed St, [yo, k2tog, work 4 sts in Seed St] 8 times.

Bind off in pat.

Button band

Beg at cast-on edge of skirt, pick up and knit 18 sts evenly to top of skirt, and 31 sts to neck edge of bodice—49 sts.

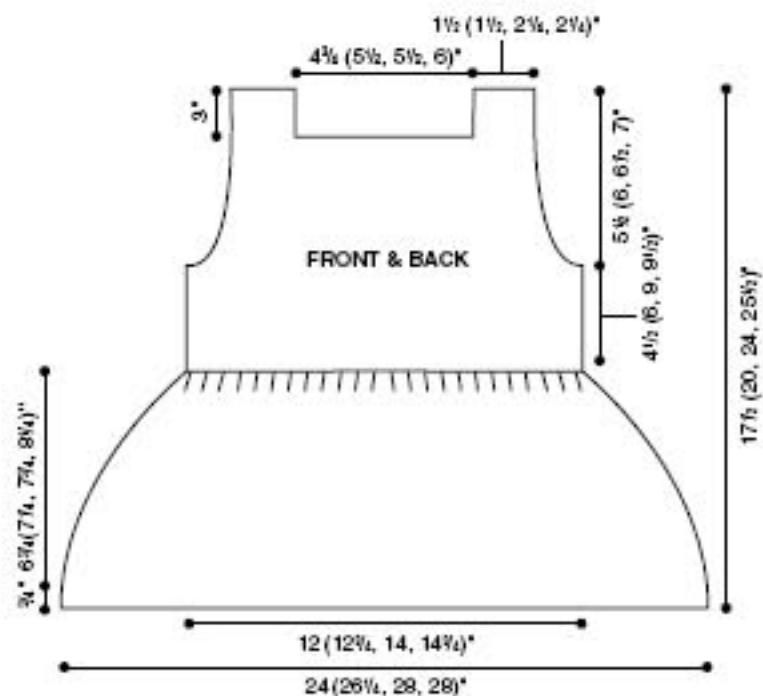
Work in Seed st as for buttonhole band, omitting buttonholes.

Buttons

Make 8

With MC and smaller needles, cast on 2 sts, leaving 6-inch end.

Row 1: [K1, yo, k1, yo, k1] all in same st, k1—6 sts.



Row 2: Purl across.

Row 3: Counting from tip, pass 2nd st on LH needle over first st and off needle, then 3rd st, 4th st and 5th st, k1—2 sts.

Cut yarn, leaving 6-inch end; remove needle and pull end through sts. Fasten off.

Matching buttonholes, sew bobbles to Row 2 of button band.

Doll's Bag

Center Panel

With larger needles and MC, cast on 13 sts.

Beg with Row 2, work Rows 2–12 of Star Tweed pat.

Rows 13–26: Work Rows 1–12 of pat, ending with Row 2.

Bind off kwise.

Side Panel

Row 1: With MC and larger needles, RS of center panel facing, pick up and knit 20 sts evenly across 1 edge.

Rows 2 and 4: Knit across.

Bind off kwise.

Rep for other side.

Fold center panel in half along Row 13. Matching corners of 1 side panel, sew bound-off sts tog from ends of rows to fold. Rep for other side.

Flap

Row 1: Pick up and knit 17 sts evenly across bound-off sts of purse.

Row 2: Knit across.

Rows 3–5: Bind off 1 st, knit across—14 sts rem at end of Row 15.

Row 6: Bind off 1 st, k6, yo, k2tog (buttonhole), k5—13 sts.

Rows 7–9: Bind off 1 st, knit across—10 sts after Row 9.

Bind off kwise.

Fold flap over front, sew smaller button on center panel to match buttonhole.

Strap


Row 1: With MC and larger needles, cast on 80 sts.

Bind off kwise. Being careful not to twist strap, sew ends to top of purse side seams. ■



Design by
BRENDA CASTIEL

Elise Dress

Skill Level  EASY

Size

Child's 2 (4, 6, 8) Instructions are given for smallest size, with larger sizes in parentheses. When only 1 number is given, it applies to all sizes.

Finished Measurements

Chest: 23 (25, 27, 29) inches
Length: 16 (18, 20½, 23) inches, without ruffle

Materials

- Worsted weight yarn* (84 yds/50g per ball): 6 (7, 8, 9) balls dusk #771
- Size 7 (4.5mm) 24- or 32-inch circular needle or size needed to obtain gauge
- Stitch markers, CC for beg of rnd
- Stitch holders

*Sample project was completed with 1824 Cotton Whirl (100% cotton) from Mission Falls. If substitute is needed, Paton's Pure in ruby rose is a similar yarn/color.



Gauge

18 sts and 24 rows = 4 inches/10cm in St st.
To save time, take time to check gauge.

Special Abbreviations

Knit front and back (kfb): Inc 1 by knitting in front and then back of next st.

Make 1 (M1): Inc 1 by inserting LH needle from front to back under the horizontal thread between the last st worked and next st on LH needle; with RH needle, k1-tbl.

Pattern Note

This dress is completely reversible, both inside and out and back to front.

Yoke

Cast on 72 (76, 80, 82) sts. Place marker on needle and join to work in rnds, being careful not to twist sts.

Rnd 1: K18 (19, 20, 21), place marker, k18 (19, 20, 20), place marker, k18 (19, 20, 21), place marker, k18 (19, 20, 20).

Rnd 2: Purl around.

Rnd 3: Knit around.

Rnd 4: Purl around.

Rnd 5 (inc rnd): K2, M1, *knit to st before marker, M1, k2, M1; rep from * twice more, knit to st before end of rnd marker, M1, k1—80 (84, 88, 90) sts (8 sts inc).

Rnd 6: Purl around.

Rnd 7: Rep Rnd 5—88 (92, 96, 98) sts.

Rnd 8: Purl around.

Rnd 9: Knit around.

Rnd 10: Purl around.

Rep [Rnds 5–10] 4 times—152 (156, 160, 162) sts.

Size 2: Rep Rnds 5 and 6—160 sts.

Sizes 4, 6 and 8: Rep Rnds 5–10—172 (176, 178) sts.

Size 8: Rep Rnds 5 and 6—186 sts.

Next rnd (all sizes): Removing markers, k45 (48, 49, 52) sts for front, place next 35 (38, 39, 41) on holder or scrap yarn for sleeve, place next 45 (48, 49, 52) sts on holder or scrap yarn for back, and place next 35 (38, 39, 41) on holder or scrap yarn for 2nd sleeve.

Front

Row 1 (RS): K1, M1, knit to last st, M1, k1—47 (50, 51, 54) sts.

Row 2: Purl across.

Rep [Rows 1 and 2] 2 (2, 4, 5) more times—51 (54, 59, 64) sts. Place sts on holder or scrap yarn.

Back

Place sts for back on needle, join yarn.
Row 1 (RS): K1, M1, knit to last st, M1, k1.

Row 2 (WS): Purl across.

Rep [Rows 1 and 2] 2 (2, 4, 5) more times—51 (54, 59, 64) sts. Do not break yarn.

With RS facing, knit across front and back sts, casting on 1 (3, 2, 2) st(s) at each armhole and marking center of each underarm for side seam; place marker on needle and join to work in rnds—104 (114, 122, 132) sts.

Body

Rnds 1–4: Knit around.

Rnd 5 (inc rnd): *Knit to 1 st before marker, M1, k1, slip marker, M1; rep from * once more, knit to end of rnd—108 (118, 126, 136) sts (4 sts inc).

Rnds 6–9: Knit around.

Rnd 10: Rep Rnd 5—112 (122, 130, 140) sts.

Rnds 11 and 12: Knit around.

Rnd 13: Kfb in every st around—224 (244, 260, 280) sts.

Rnds 14–18 (19, 20, 21): Purl around.
Rnd 19 (20, 21, 22): *K2tog; rep from * around—112 (122, 130, 140) sts.

Rep [Rnds 1–19 (20, 21, 22)] 2 (2, 2, 3) times—128 (138, 146, 164) sts.

Note: Adjust length at this point by making last St st section longer or shorter.

Rnds 1–4: Knit around.

Rnd 5 (inc rnd): *Knit to st before

marker, M1, k1, slip marker, M1; rep from * once more, knit to end of rnd—132 (142, 150, 168) sts.

Rnds 6–11: Knit around.

Rnd 12: Rep Rnd 5—136 (146, 154, 172) sts.

Rnds 13–15: Knit around.

Skirt ruffle

Next rnd: Kfb in every st around—272 (292, 308, 344) sts.

Purl 6 (7, 8, 9) rows. Bind off.

Sleeve ruffle

Place 35 (38, 39, 41) sleeve sts on needle.

Row 1: Kfb in every st across—70 (76, 78, 82) sts.

Turn.

Work in rev St st for 6 (7, 8, 9) rows.

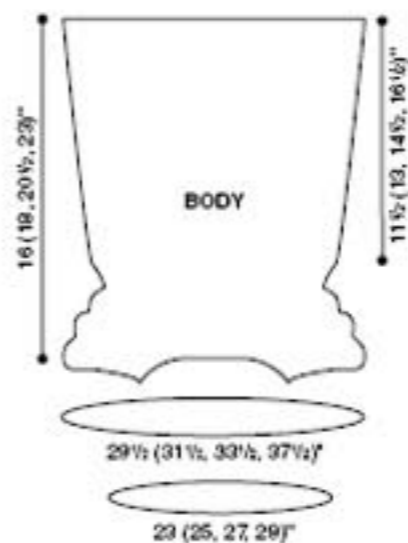
Bind off.

Rep for other sleeve.

Finishing

Sew corners of shoulder ruffles to armhole edge, if desired.

Block dress. Ruffles can be allowed to curl, or can be blocked flat. ■




This free-spirited dress will suit any occasion; she can wear it alone, as a jumper or over her favorite dress.



Design by
GAIL PFEIFLE

The Bicycle Pullover

Aspiring bike
riders will wear
this for school or
play with pride.

Skill Level  INTERMEDIATE

Sizes

Child's 2 (4, 6, 8) Instructions are given for smallest size, with larger sizes in parentheses. When only 1 number is given, it applies to all sizes.

Finished Measurements

Chest: 26 (28, 30, 32) inches
Length: 13 (15, 16, 17½) inches

Materials

- Light worsted yarn* (98 yds/50g per ball): 4 (5, 5, 6) balls charcoal #18 (A), 2 (3, 3, 4) balls Jamaican blue #80 (B)
- Size 6 (4mm) needles
- Size 8 (5mm) needles or size needed to obtain gauge
- Stitch markers
- Stitch holders



*Sample project was completed with Schulana Merino Cotton 90 (53% merino wool/47% cotton) from Skacel Collection.

Gauge

18 sts and 25 rows = 4 inches/10cm in St st on larger needles.
To save time, take time to check gauge.

Stripe Pattern

In St st, work *2 rows A, 4 rows B; rep from * for pat.

Pattern Notes

The bicycle on the front of the sweater is worked in stockinette stitch from a chart. Right-side rows are knit from right to left and wrong-side rows are purled from left to right.

Work all decreases 1 stitch in from the edge by knit 2 together (k2tog) on right-side rows and purl 2 together (p2tog) on wrong-side rows.

Back

With smaller needles and A, cast on 61 (65, 67, 71) sts.

Work in St st for 6 rows.

Change to larger needles and continue in St st until back measures

13 (15, 16, 17½) inches from rolled edge (let edge roll before measuring), ending with a WS row.

Next row: Bind off 16 (18, 18, 19) sts; knit across next 29 (29, 31, 33) sts and place on holder for neck; bind off rem 16 (18, 18, 19) sts.

Front

With smaller needles and A, cast on 61 (65, 67, 71) sts.

Work in St st for 6 rows.

Change to larger needles and continue in St st until front measures 4½ (5½, 6½, 7½) inches from rolled edge (let edge roll before measuring), ending with a WS row.

Set up pat

K11 (13, 14, 16), place marker, knit Row 1 of Bicycle chart across next 39 sts; place marker, k11 (13, 14, 16) sts.

Continue in established pat until all rows of chart are completed.

Work in St st with A until front measures 10½ (12½, 13½, 15) inches from

rolled edge (let edge roll before measuring), ending with a WS row.

Shape neck

Next row: K22 (24, 24, 25) sts, place next 17 (17, 19, 21) sts on holder for neck; join 2nd ball of yarn and knit rem sts—22 (24, 24, 25) sts on each side.

Working both sides at once with separate balls of yarn, continue in St st, dec 1 st at neck edge [every row]

6 times—16 (18, 18, 19) sts.

Work even until front is same length as back, ending with a WS row. Bind off.

Sew right shoulder seam.

Neck edging

With RS facing, smaller needles and A, pick up and knit 13 sts on left front edge, knit 17 (17, 19, 21) sts from holder, pick up and knit 13 sts on right front, knit across 29 (29, 31, 33) sts from back holder—72 (72, 76, 80) sts.

Work 5 rows in St st.



Change to B and work 6 rows in St st ending with a WS row.
Loosely bind off all sts.
Sew left shoulder seam.

Sleeves

Mark 6½ (7, 7½, 8) inches from shoulder seam on front and back.
With larger needles and A, pick

up and knit 58 (63, 68, 72) sts evenly between markers.

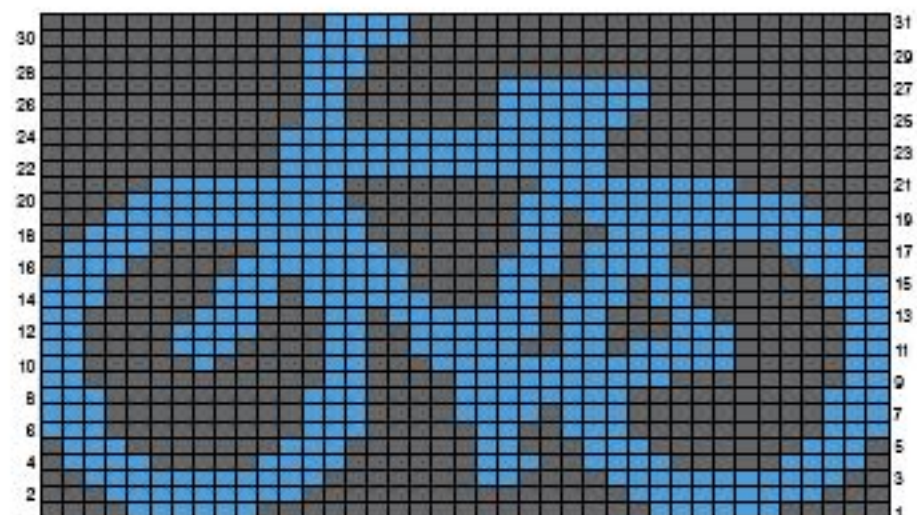
Beg Stripe pat and at the same time, dec 1 st at each edge [every 3rd row] 12 (13, 15, 16) times—34 (37, 38, 40) sts.

Continue even in Stripe pat until sleeve measures 9 (10, 11, 12) inches, ending with a WS row.

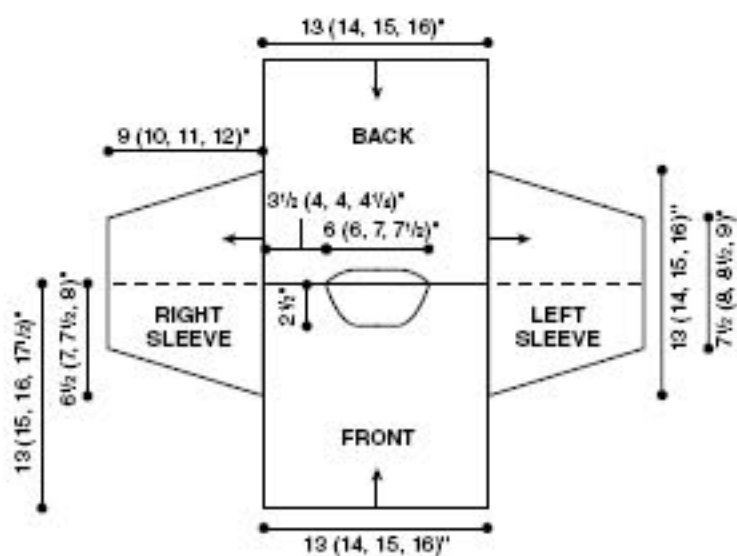
Change to smaller needles and B. Work 6 rows in St st, ending with a WS row. Bind off loosely.
Rep for other sleeve.

Finishing

Block. Sew side and sleeve seams. ■



BICYCLE CHART



Note: Arrows indicate direction of knitting.

Design by
WORLD VISION KNIT FOR KIDS*

This quick-to-knit design will please a deserving child.

Skill Level EASY

Sizes

Child's 2 (4, 6, 8, 10) Instructions are given for the smallest size, with larger sizes in parentheses. When only 1 number is given, it applies to all sizes.

Finished Measurement

Chest: 27 (28, 29, 30, 31) inches

Materials

- Worsted weight acrylic yarn: 9 (10, 12, 14, 16) oz color of choice
- Size 5 (3.75mm) needles
- Size 7 (4.5mm) needles or size needed to obtain gauge



Gauge

20 sts = 4 inches/10cm in St st on larger needles.
To save time, take time to check gauge.

Front/Back

With smaller needles, cast on 66 (70, 74, 78, 82) sts.

Knit 10 rows.
Change to larger needles.

Work in St st until piece measures 8½ (9½, 10½, 11½, 12½) inches from cast-on edge, ending with a WS row.

Sleeves

Row 1 (RS): Cast on 28 (30, 32, 34, 36) sts loosely for first sleeve and knit across—94 (100, 106, 112, 118) sts.

Row 2: Cast on 28 (30, 32, 34, 36) sts for 2nd sleeve and purl across—122 (130, 138, 146, 154) sts.

Continue in St st, knitting first and last st on each row for selvage st, until sleeve measures 5½ (6, 6½, 7, 7½) inches, ending with a WS row.
Bind off all sts.

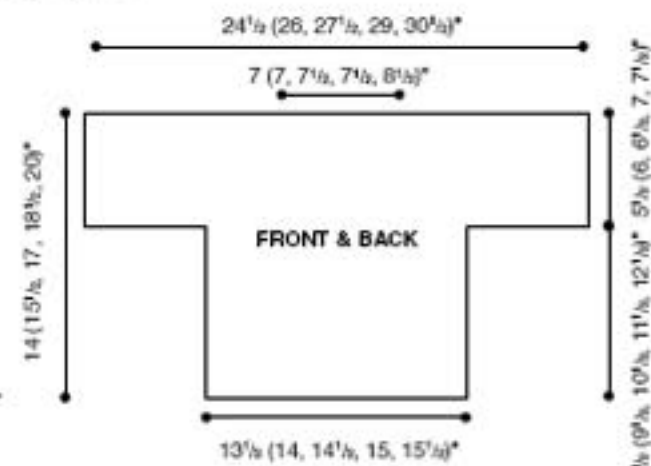
Finishing

Sew shoulder seam, leaving a 7 (7, 7½, 7½, 8½)-inch neck opening in center.

Sew sleeve and side seams in 1 continuous seam.

*For more information about Knit for Kids (the program that distributes hand knit sweaters to children

worldwide), please go to knitforkids@worldvision.org. ■



Knits for Kids T-Top



Design by
KATHY NORRIS

Howdy, Pardner Cowboy Hat

Knitted and then felted, our 10-gallon hat will inspire dreams for your little dude.

Skill Level ■■■■ □
INTERMEDIATE

Sizes

Child's 4 (6) Instructions are given for the smallest size, with larger size in parentheses. When only 1 number is given, it applies to both sizes.

Finished Measurements

Hat circumference: 20 (21) inches, after felting

Crown height: 8 (9½) inches, after felting

Materials

- Worsted weight* (210 yds/100g per ball): 2 balls light brown #144 (MC), 1 ball dark brown #66 (CC)
- Size 9 (5.5mm) double-point (set of 5) and 24-inch circular needles or size needed to obtain gauge
- Size 10 (6mm) needle or 1 size larger than needle used to obtain gauge (for binding off brim)
- Crochet hook (optional)
- Rustproof pins
- Stitch marker



*Sample project was completed with Galway Worsted (100% wool) from Plymouth Yarn Co.

Gauge

16 sts and 21 rows = 4 inches/
10cm with smaller needles in St st,
before felting.
To save time, take time to check gauge.

Special Abbreviation

Knit in front and back (kfb): Inc 1 by knitting in front and then in back of next st.

Special Techniques

Brim Stitch Pick-Up

Sts for brim are picked up along last row of knit sts (before bind-off row) on RS of finished hat body.

With RS of finished hat body facing, insert needle or crochet hook into space beside a knit st of last row before bind-off, along back side of knit st and to RS of hat body on other side of knit st as shown in photos A and B.

I-Cord Bind-Off

At beg of row, cable cast on (see page 110) 3 sts. *K2, ssk, slip 3 sts back to LH needle, bringing yarn across back; rep from * until all sts are bound off. Cut yarn and pull tail through last 3 sts of I-cord.

Pattern Notes

All increases are made by knitting in the front and back of the stitch.

Hat is worked top down to required length and bound off. Stitches are then picked up for brim using special Brim Stitch Pick-Up technique. Brim is then knitted from base of hat outward and bound off in contrasting-color yarn using I-Cord Bind-Off.

Hat

With MC and dpns, cast on 8 sts, leaving long tail. Distribute sts evenly on 4 needles, place marker, and join to work in rnds.

Note: Change to circular needles as needed.

Rnd 1 and all odd-numbered rnds: Knit around.

Rnd 2: Kfb in each st—16 sts.

Rnd 4: *K1, kfb; rep from * around—24 sts.

Rnd 6: *K2, kfb; rep from * around—32 sts.

Rnd 8: *K3, kfb; rep from * around—40 sts.

Rnd 10: *K4, kfb; rep from * around—48 sts.

Rnd 12: *K5, kfb; rep from * around—56 sts.

Rnd 14: *K6, kfb; rep from * around—64 sts.

Rnd 16: *K7, kfb; rep from * around—72 sts.

Rnd 18: *K8, kfb; rep from * around—80 sts.

Rnd 20: *K9, kfb; rep from * around—88 sts.

Size 6 only

Rnd 21: Knit around

Rnd 22: *K10, kfb; rep from * around—96 sts.

Both sizes

Work in St st (knit every rnd) until hat measures 9½ (11½) inches.

Hatband

Change to CC and knit 9 rows. Bind off loosely.

Brim

With MC and circular needle, pick up 88 (96) sts using Brim Stitch Pick-Up method around knit sts in last rnd so that brim is at right angle to hat body.

Rnd 1: Knit around

Rnd 2: *K1, kfb; rep from * around—132 (144) sts.

Rnds 3–5: Knit around.

Rnd 6: *K1, kfb; rep from * around—198 (216) sts.

Rnds 7–12: Knit around.

Rnd 13: *K2, kfb; rep from * around—264 (288) sts.

Rnds 14–21: Knit around.

With CC and larger needle, bind off using I-Cord Bind-Off.

Finishing

Close center of crown if necessary using cast-on yarn tail. Sew I-cord band cast-on and bind-off sts tog.

Felting

Place hat in zippered pillowcase. Set washing machine on smallest load using hot water, and place zippered pillowcase into washing machine along with old pair of jeans (or other item like old tennis shoes) to increase agitation. Add small amount of dish-washing soap. Start machine and check progress after 10 minutes. Restart if yarn is not felted or hat is not size you want. Check progress frequently after restarting. Do not allow machine to drain, rinse or spin.

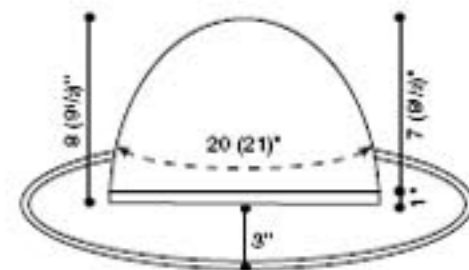
After hat is felted, rinse by hand in warm water. Remove excess water by rolling it in a towel or gently squeezing.

Shape hat

While still wet from felting process, place on round bowl or other object that is same circumference as head size. Place hat, while still on object, on a flat surface that will allow you to pin brim flat. Smooth brim out to prevent ruffling, and pin in place around entire circumference of brim. Shape top of hat by stretching body to produce a slight oval. Make indentation at crown

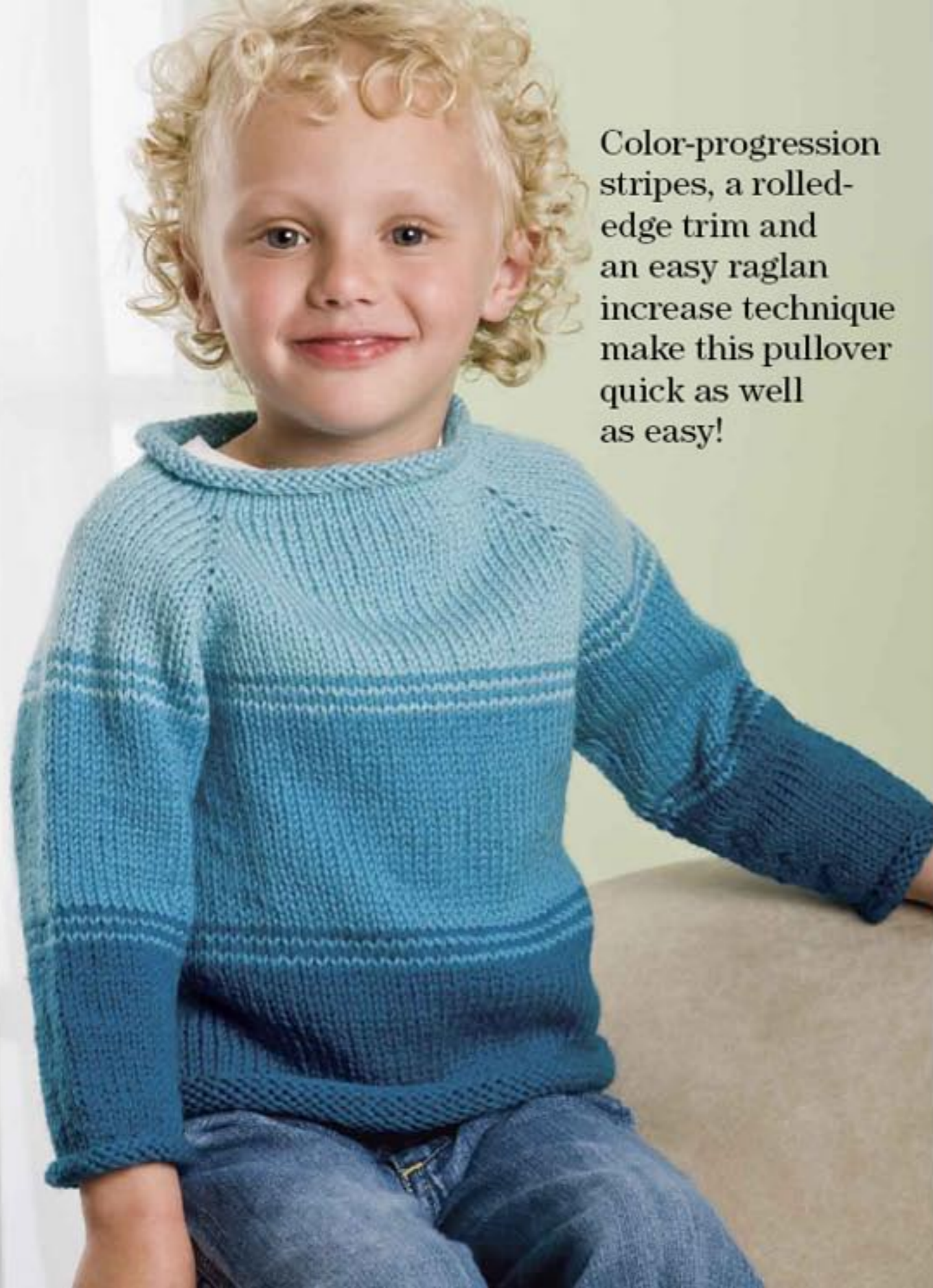
top using fingers to pitch sides of oval and pressing lightly at center of oval. Remove pins from brim along long side of oval. Roll sides of brim upward until sides will stay rolled. Pin rolled sides to side of hat body if necessary to "teach it" to stay rolled. Allow to dry in this position.

Thread a tapestry needle with same color yarn, and sew each side of hat in place with a few straight stitches to secure into place. ■



Note: Schematic reflects after-felting measurements.





Color-progression stripes, a rolled-edge trim and an easy raglan increase technique make this pullover quick as well as easy!

Design by
SARA LOUISE HARPER

Shades for Play

Gauge

16 sts and 24 rows = 4 inches/10cm
in St st.
To save time, take time to check gauge.

Special Abbreviations

Make 1 Left (M1L): Insert LH needle from front to back under the running thread between the last st worked and next st on LH needle, k1-tbl.

Make 1 Right (M1R): Insert LH needle from back to front under running thread between the last st worked and next st on LH needle, k1.

Place marker (pm): Place marker on needle.

Pattern Stitch

Color Progression

*Knit 1 rnd with new color, then 1 rnd with old color; rep from * once, then continue with new color.

Pattern Notes

Raglan sweater is worked down from the rolled collar. When the yoke is complete, sleeve stitches are placed on waste yarn while the body is completed; sleeves are worked in the round from the armhole down.

When measuring the final length, allow edge to roll slightly as it will when worn.

The Make 1 (M1) raglan stitches are both worked in the same running thread; the 2nd will be tight to work.

Rolled Collar

With circular needle and A, cast on 72 (74, 76, 78, 78) sts, pm and join without twisting.

Work in St st for 2 inches. Pm in fabric on last rnd.

Yoke

Set-up rnd: K22 (24, 26, 28, 30) front sts, pm; k14 (13, 12, 11, 9) sleeve sts, pm, k22 (24, 26, 28, 30) back sts, pm; k14 (13, 12, 11, 9) sleeve sts.

Raglan Inc rnd: *Knit to marker, M1L, sl marker, M1R; rep from * to beg of rnd marker, making last M1R following that marker.

Rep Raglan Inc rnd [every other rnd] 16 (17, 18, 19, 20) times—208 (218, 228, 238, 246) sts.

At the same time, when 25 (27, 29, 31, 33) rnds have been worked from marker, change to B and work Color Progression pat with A and B.

Divide body & sleeves

When raglan incs are complete, place 48 (49, 50, 51, 51) sleeve sts at each side on waste yarn.

Body

Continue working on 112 (120, 128, 136, 144) body sts in St st and at the same time, when 25 (27, 29, 31, 33) rnds of B are complete, change to C and work Color Progression pat with B and C, then continue in C until body measures 9 (10, 11, 11, 12) inches or desired length from underarm.

Bind off all sts very loosely, allowing lower edge to roll.

Sleeves

Slip sleeve sts to dpns, then pick up and knit 2 sts from underarm, placing beg of rnd marker between them—50 (51, 52, 53, 53) sts.

Work 3 (3, 4, 4, 6) rnds even in St st.

Dec rnd: K1, ssk, knit to last 3 sts, k2tog, k1—48 (49, 50, 51, 51) sts.

Continue in St st and rep Dec rnd [every

Skill Level  EASY

Sizes

Child's 4 (6, 8, 10, 12) Instructions are given for smallest size, with larger sizes in parentheses. When only 1 number is given, it applies to all sizes.

Finished Measurements

Chest: 28 (30, 32, 34, 36) inches
Length: 14 $\frac{3}{4}$ (16, 17 $\frac{1}{4}$, 17 $\frac{3}{4}$, 19) inches (excluding collar)

Materials

- Worsted weight yarn* (210 yds/100g per ball): 1 (1, 1, 2, 2) ball(s) each light teal #111 (A), teal #149 (B), dark teal #116 (C)
- Size 8 (5mm) double-point and 24-inch circular needles or size needed to obtain gauge
- Stitch markers

*Sample project was completed with Galway Worsted (100% wool) from Plymouth Yarn Co.



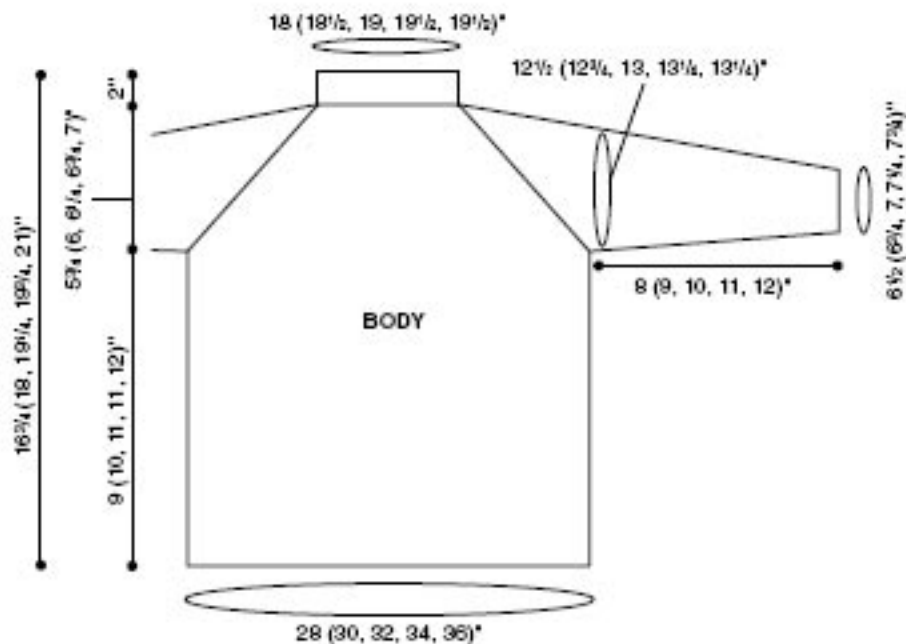
4th (4th, 5th, 5th, 7th) rnd] 11 (11, 11, 11, 10) times—26 (27, 28, 29, 31) sts.

At the same time, when 25 (27, 29, 31, 33) rnds of B are complete, change to C and work Color Progression pat with B and C, then work even with C until sleeve measures 8 (9, 10, 11, 12) inches or desired length.

Bind off very loosely, allowing cuff to roll.

Finishing

Weave in loose ends. Block to finished measurements. ■



CROCHET CLASS

Here are the crochet stitches that are used for the projects in this issue.

Crochet Abbreviations

ch	chain stitch
dc	double crochet
hdc	half double crochet
sc	single crochet
sl st	slip stitch
yo	yarn over

Chain (ch)

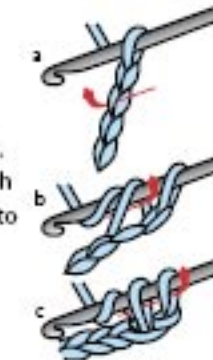
Yo, pull through lp on hook.



Single Crochet (sc)

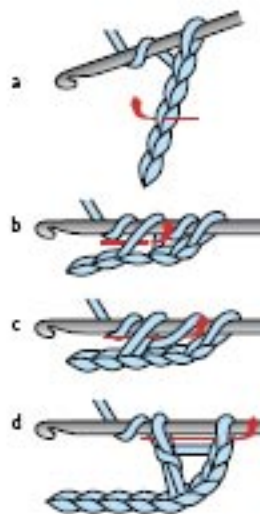
Insert the hook in the second chain through the center of the V. Bring the yarn over the hook from back to front. Draw the yarn through the chain stitch and onto the hook.

Again bring yarn over the hook from back to front and draw it through both loops



Double Crochet (dc)

Yo, insert hook in st, yo, pull through st, (yo, pull through 2 loops) 2 times.



Slip Stitch (sl st)

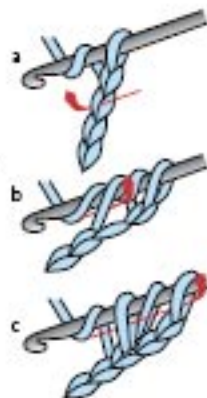
Insert hook under both loops of the stitch, bring yarn over the hook from back to

Half Double Crochet (hdc)

Bring yarn over hook from back to front, insert hook in indicated chain stitch.

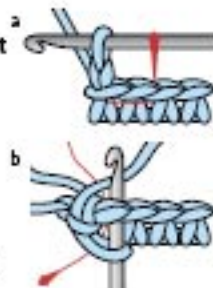
Draw yarn through the chain stitch and onto the hook.

Bring yarn over the hook from back to front and draw it through all three loops on the hook in one motion.



Reverse Single Crochet (reverse sc)

Chain 1 (a). Skip first stitch. Working from left to right, insert hook in next stitch from front to back (b), draw up loop on hook, yarn over, and draw




//

Design by
DIANE ZANGL

Practice your
cable skills
with these
cute blocks
for baby's
safe play.

Cabled Baby Blocks

Skill Level  INTERMEDIATE

Finished Size
Approx 6-inch cube

Materials

- Worsted weight yarn * (196 yds/
100g per ball): 1 ball blueberry
field #631 OR pumpkin garden #541
OR veranda #423
- Size 7 (4.5mm) needles
- Cable needle
- Stitch markers
- Polyester fiberfill



* Sample project was completed in Ty-Dy
(100% cotton) from Knit One, Crochet Too.

Gauge

Specific gauge is not critical for this
project; work at a fairly tight gauge so
fiberfill does not show through sts.

Special Abbreviation

Place marker (pm): Place marker
on needle.

Pattern Notes

Markers are used to separate the
patterns that form the individual sides
of the block.

The photographed blocks are the
same pattern shown in different
colorways.

Sides A, B & C

Cast on 106 sts. Purl 1 row.

Set-up pat (RS): K1, pm, work Row 1 of
Chart A over next 34 sts, pm, k1, pm,
work Row 1 of Chart B over next 34 sts,
pm, k1, pm, work Row 1 of Chart C over
34 sts, pm, k1.

Working edge sts and marked sts in St
st and rem sts in established pats, work
even for 31 more rows.

Bind off all sts kwise on RS. Cut yarn.

Side D

With WS facing, pick up and purl 1 st in
each of center 36 sts (Chart B sts and 2

St st side sts), going through top bar of
purl st behind each bound-off st
(see Figure 1).

Next row (RS): K1, work Row 1 of
Chart D over next 34 sts, k1.

Working edge sts in St st and rem sts
following Chart D, work even for
31 rows more.

Bind off all sts kwise on RS. Do not
cut yarn.

Side E

With WS facing, pick up and purl 1 st in
each of 36 side D sts.

Work as for side D, using Chart E.

Block F

With WS facing, pick up and purl 1 st in
each of 36 side E sts.

Work as for side D, using Chart F.

Assembly

Block to measurements.

Sew seams, forming a box with an
open lid. Stuff with fiberfill. Sew rem
seams. ■



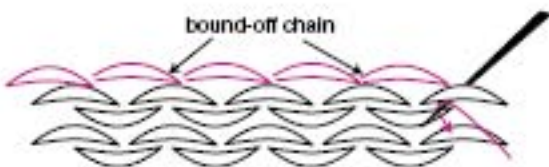


FIGURE 1
Pick Up Purlwise
Insert needle under top bar of st, wrap yarn around needle as if to purl, pull loop through st.

STITCH KEY	
	K on RS, p on WS
	P on RS, k on WS
	Sl 2 to cn and hold in front, p2, k2 from cn.
	Sl 2 to cn and hold in back, k2, p2 from cn.
	Sl 2 to cn and hold in front, k2, k2 from cn.
	Sl 2 to cn and hold in back, k2, k2 from cn.
	Sl 4 to cn and hold in front, k4, k2 from cn.
	Sl 4 to cn and hold in back, k2, k4 from cn.
	Sl 4 to cn and hold in front, k4, k4 from cn.
	Sl 4 to cn and hold in back, k4, k4 from cn.

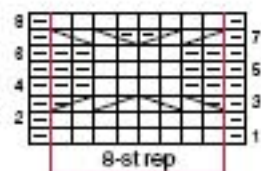


CHART A

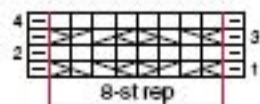


CHART B

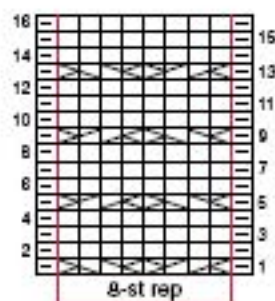


CHART C

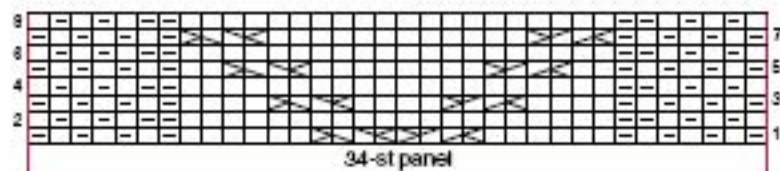


CHART D



CHART E

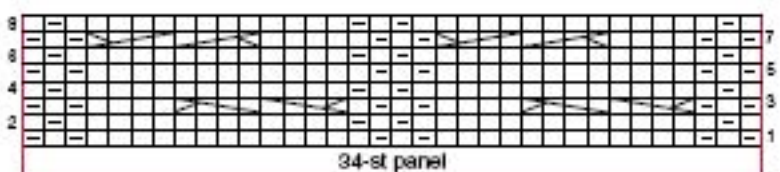


CHART F

Design by
KATHY WESLEY

Mary Jane Socks



Baby girl's footies will have dress-up style in these clever socks.

Gauge

20 sts and 32 rows = 4 inches/10cm
in St st.
To save time, take time to check gauge.

Cuff

With A, cast on 38 sts.
Row 1 (WS): K2, *p2, k2; rep from * across.
Row 2 (RS): P2, *k2, p2; rep from * across.

Rep Rows 1 and 2 until cuff measures 2 inches, ending with a WS row.

Sock

Row 1 (RS): K2tog, [k4, k2tog] 6 times—31 sts.
Row 2: Purl across.
Row 3: Knit across.
Row 4: Purl across.
Rows 5 and 6: Rep Rows 3 and 4.

Instep

Row 1 (RS): K21, slip rem 10 sts onto holder.
Row 2: P11, slip rem 10 sts onto holder.
Row 3: K11.
Row 4: P11.

Rep Rows 3 and 4 until instep measures 1½ inches, ending with a WS row. Cut A.

Foot

Hold sock with RS facing and instep to left, with B, knit across 10 sts on first holder, pick up and knit 12 sts along side edge of instep, knit across 11 instep sts, pick up and knit 12 sts along other side of instep, knit 10 sts from 2nd holder—55 sts.
Knit 9 rows.

Sole

Row 1 (RS): K4, k2tog, k14, k2tog, k11, k2tog, k14, k2tog, k4—51 sts.
Rows 2, 4, 6 and 8: Knit across.
Row 3: K3, k2tog, k14, k2tog, k9, k2tog, k14, k2tog, k3—47 sts.
Row 5: K2, k2tog, k14, k2tog, k7, k2tog, k14, k2tog, k2—43 sts.
Row 7: K1, k2tog, k14, k2tog, k5, k2tog, k14, k2tog, k1—39 sts.
Row 9: K2tog, k14, k2tog, k3, k2tog, k14, k2tog—35 sts.
Bind off, leaving a long end for sewing.

Strap

With B and crochet hook, ch 10. Sc in 2nd ch from hook and in each rem ch. Fasten off.

Note: If not familiar with chain st (ch) and single crochet (sc), refer to Crochet Class on page 108.

Finishing

Sew bottom and back seam.
Tack each end of strap to sock at ankle. Sew button to end of strap through all thicknesses. ■

Skill Level 4
EASY

Size

One size fits 4-inch-long foot

Materials

- Worsted weight yarn* (157 yds/3 oz per skein): 1 skein each white #2601 (A), black #2680 OR autumn red #2721 (B)
- Size 5 (3.75mm) needles or size needed to obtain gauge
- Size H/8 (5mm) crochet hook (for strap)
- Stitch holders
- 2 (¼-inch) pearl buttons
- Sewing needle and matching thread

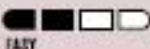
*Sample project was completed with Simply Soft (100% acrylic) from Caron International.



Design by
BETH BECK FOR
CARDIFF BAY HANDKNITS

Annalise Summer Cap

Dress her in style with a soft cap complete with its own spring blossom.

Skill Level  EASY

Sizes

Child's 2 (4, 6, 8) Instructions are given for smallest size, with larger sizes in parentheses. When only 1 number is given, it applies to all sizes.

Finished Measurement

Circumference: Approx 15 (15½, 16, 16¾) inches

Note: The project yarn allows for plenty of stretch; therefore, the circumference of the hat may be smaller than head circumference.

Materials

- Size 5 thread* (77 yds/1¾ oz per ball):
2 balls rose pink #12
- Size 6 (4mm) straight needles
- Purchased craft flower (optional)

*Sample project was completed with America's Best Article 940 (100% mercerized cabled perle cotton) from Pisgah Yarn & Dyeing Co. Inc.

Gauge

24 sts and 28 rows= 4 inches/10cm in Seed St.

To save time, take time to check gauge.

Pattern Stitches

Seed St (even number of sts)

Row 1: *K1, p1; rep from * across.

Row 2: Purl the knit sts and knit the purl sts across.

Rep Row 2 for pat.

Lace (even number of sts)

Row 1: P1, *yo, p2tog; rep from * to last st, p1.

Rep Row 1 for pat.

Hat

Cast on 82 (86, 92, 94) sts.

Work 4 (4, 4, 6) rows in k1, p1, rib.

Change to Seed St, and work 5 (6, 7, 8) rows.

Change to Lace pat and work even until Lace pat measures 1¼ (1¼, 1½, 1½) inches.

Work 5 (6, 7, 8) rows in Seed St.

Next row: Work in Seed St, dec 1 st at each edge—80 (84, 90, 92) sts.

Shape crown

Row 1 (RS): *K8, p2tog; rep from * to last 0 (4, 0, 2) sts, k0 (4, 0, 2)—72 (76, 81, 83) sts.

Rows 2–4: Knit the knit sts and purl the purl sts.

Row 5: *K7, p2tog; rep from * to last 0 (4, 0, 2) sts, k0 (4, 0, 2)—64 (68, 72, 74) sts.

Rows 6–8: Knit the knits and purl the purls.

Row 9: *K6, p2tog; rep from * to last 0 (4, 0, 2) sts, k0 (4, 0, 2)—56 (60, 63, 65) sts.

Rows 10–12: Work even in pat.

Row 13: *K5, p2tog; rep from * across row to last 0 (4, 0, 2) sts, k0 (4, 0, 2)—48 (52, 54, 56) sts.

Row 14: Work even in pat.

Row 15: *K4, p2tog; rep from * to last 0 (4, 0, 2) sts, k0 (4, 0, 2)—40 (44, 45, 47) sts.

Row 16: Work even in pat.

Row 17: *K3, p2tog; rep from * to last 0 (4, 0, 2) sts, k0 (4, 0, 2)—32 (36, 36, 38) sts.

Row 18: Work even in pat.

Row 19: *K2, p2tog; rep from * to last 0 (4, 0, 2) sts, k0 (4, 0, 2)—24 (28, 27, 29) sts.

Row 20: Work even in pat.

Row 21: *K2tog; rep from * to last k0 (0, 1, 1) st(s), k0 (0, 1, 1)—12 (14, 14, 15).

Cut yarn, leaving long end for sewing back seam. With WS facing, weave end through rem sts. Pull tight and secure to close top of hat.

Rolled Brim

With RS facing, pick up and knit 78 (82, 88, 90) sts across cast-on edge, working through both loops.

Next row: Purl across.

Next row (RS): K1, *k2tog, yo; rep from * to last st, k1.

Next row: Work in Seed St.

Bind off in Seed St pat, keeping tension somewhat firm. Fasten off, leaving 6-inch length of yarn.

Finishing

Sew seam. Roll lower border and tack in place at sides. Attach purchased flower, if desired. ■



Design by
MICHELE WILCOX

Oliver Owl

Who loves to play? This friendly flyer will be fun for years to come.

Skill Level  EASY

Finished Size
Approx 7 inches tall

Materials

- Worsted weight yarn: 2½ oz/125 yds brown and small amount each of gold, off-white and beige
- Size 6 (4mm) needles or size needed to obtain gauge
- Polyester fiberfill
- 6mm animal eyes (optional)



Gauge

14 sts and 24 rows = 4 inches/10cm in St st.
To save time, take time to check gauge.

Special Abbreviation

Knit in front and back (kfb): Inc 1 by knitting in front and back of next st.

Pattern Note

Instructions are given for knit eyes if animal is to be used by a young child.

Head

Beg at neck with brown, cast on 18 sts.
Row 1: Knit across.
Row 2: Purl across.
Row 3: Kfb in each st across—36 sts.
Row 4: Purl across.
Rows 5–20: [Rep Rows 1 and 2] 8 times.
Row 21: [K2tog] across row—18 sts.
Row 22: Purl across.
Row 23: Rep Row 21—9 sts.

Cut yarn, leaving a long end. Thread end into yarn needle, draw through all sts on needle, pull tight to secure. Sew

back seam and stuff head. Do not sew neck opening.

Eyes

Make 2

With off-white, cast on 3 sts.
Row 1: Kfb in each st across—6 sts.
Row 2: Rep Row 1—12 sts.
Row 3: *K1, kfb; rep from * across—18 sts.
Row 4: Knit across.

Bind off. Shape into circle and sew seam. Sew in place on face, and then insert either purchased animal eye or knit eye.

Knit Eye

With brown, cast on 2 sts.
Row 1: Kfb in each st—4 sts.
Row 2: [K2tog] twice—2 sts.
Cut yarn, leaving a long end. Thread end into yarn needle, draw end through both sts on needle and pull tight to secure. Gather around edge of piece and pull tog.

Beak

With gold, cast on 6 sts.
Rows 1 and 3: Knit across.
Row 2: Purl across.
Row 4: [P2tog] across—3 sts.
Cut yarn, leaving a long end. Thread end into yarn needle, draw through all sts on needle, pull tight to secure. Referring to photo, sew in place.

Ears

Cut 6 (6-inch) strands of brown yarn.

Using 3 strands for each ear, make fringe knot on each side of head. Unravel strands of yarn and trim even.

Tummy

With beige, cast on 5 sts.
Row 1: Knit across.
Row 2: Kfb in each st across—10 sts.
Rows 3–14: Knit across.
Row 15: [K2tog] across—5 sts.
Bind off.

Body

Beg at bottom of body with brown, cast on 12 sts.
Row 1: Knit across.
Row 2 and all even rows: Purl across.
Row 3: Kfb of each st across—24 sts.
Row 5: *K3, kfb; rep from * across—30 sts.
Rows 7–20: Rep [Rows 1 and 2] 7 times.
Row 21: *K3, k2tog; rep from * across—24 sts.
Row 23: *K2, k2tog; rep from * across—18 sts.
Row 25: *K1, k2tog; rep from * across—12 sts.
Row 26: Purl across.
Cut yarn, leaving a long end. Thread end into yarn needle, draw through all sts on needle, pull tight to secure. Sew back seam. Attach tummy. Stuff and sew bottom seam across. Fit neck of head over top of body and sew in place.

Foot

Make 2
With gold, cast on 5 sts for first toe.



Rows 1–3: Knit across.
Row 4: Knit across, cast on 5 sts for 2nd toe—10 sts.
Row 5: Knit across 5 cast-on sts only; turn, leaving rem sts unworked.
Rows 6–8: K5.
At end of Row 8, cast on 5 sts for 3rd toe.
Row 9: Rep Row 5.
Rows 10–12: K5.
Row 13: Knit across—15 sts.
Row 14: [K2tog] 7 times, k1—8 sts.
Row 15: Knit across.

Bind off.
Fold each toe in half and sew seams. Referring to photo, sew to body.

Tail

With brown, make 2 pieces same as for foot. Do not fold and sew toes. Holding 2 flat pieces tog, sew around. Lightly stuff and sew in place.

Wing

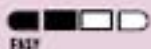
Make 2
With brown, cast on 10 sts.



Rows 1–12: Knit across.
Row 13: [K2tog] across—5 sts.
Cut yarn, leaving a long end. Thread end into yarn needle, draw through all sts on needle, pull tight to secure. Fold in half and sew side seam. Sew in place. ■

Design by
DROPS DESIGN FOR GARNSTUDIO

Ballet Slippers

Skill Level  5

Sizes

Child's small (child's medium, child's large, woman's small, woman's medium, woman's large)
Instructions are given for the smallest size, with larger sizes in parentheses. When only 1 number is given, it applies to all sizes.

Finished Measurements

Shoe size: 9–10 (10½–11½, 12–13, 6–7, 7½–8½, 9–10)

Foot length: 6¾ (7, 8, 8½, 9½, 10½) inches

Materials

- Chunky weight yarn* (54 yds/ 50g per skein): 2 (2, 2, 2, 3, 3) skeins hot pink #26
- Size 10 (6mm) double-point needles or size needed to obtain gauge
- Stitch markers
- Stitch holders
- 2 (20mm) buttons*: Inka #532

*Sample project was completed with DROPS ESKIMO (100% wool) and buttons from Garnstudio.



Keep her on her toes with these cozy, super-easy slippers to knit.

Gauge

13 sts and 17 rows = 4 inches/10cm in St st.
To save time, take time to check gauge.

Pattern Notes

Double-point needles are used to work smaller number of stitches. Do not join; work back and forth in rows.

Rib pattern allows for a lot of stretch and a flexible fit.

Right Slipper

Strap

Cast on 3 sts.
Knit 2 rows.

For woman's medium & large

Next row: K1, yo, k1, yo, k1—5 (5) sts.

For all sizes

Next row: Knit across.

Work in garter st until strap measures 2¾ (2¾, 3½, 3½, 4) inches.

Next row: K1, yo, knit to last st, yo, k1—5 (5, 5, 5, 7, 7) sts.

Next row: K1, k1-tbl, knit to last 2 sts, k1-tbl, k1.

Cut yarn and slip sts onto holder.

Foot

Cast on 3 (4, 5, 6, 6, 6) sts (toe), knit across sts from holder, cast on 6 (7, 8, 9, 10, 12) sts (heel)—14 (16, 18, 20, 23, 25) sts.

Next row: Knit across.

Next row (RS): Kfb in each of first 3 (4, 5, 5, 5) sts, knit rem sts—17 (20, 23, 25, 28, 30) sts.

Knit 2 (2, 2, 4, 4, 4) rows.

Next row (WS): K2, p2, [kfb in next st, p2] 3 (4, 5, 5, 6, 6) times, k4 (4, 4, 6, 6, 8)—20 (24, 28, 30, 34, 36) sts.

Continue in established rib and garter pats until foot measures 6 (6¼, 7, 7½, 8, 9) inches.

Next row (RS): K4 (4, 4, 6, 6, 8), *k2, p2tog; rep from * to last 4 sts, k4—17 (20, 23, 25, 28, 30) sts.

Knit 3 (3, 3, 5, 5, 5) rows,

Next row (RS): [K2tog] 3 (4, 5, 5, 5) times, work rem sts in pat—14 (16, 18, 20, 23, 25) sts.

Bind off loosely kwise.

Left Slipper

Work strap same as for right slipper.

Foot

Cast on 6 (7, 8, 9, 10, 12) sts (heel), knit

across sts from holder, cast on 3 (4, 5, 6, 6, 6) sts (toe)—14 (16, 18, 20, 23, 25) sts.

Next row: Knit across, marking beg and end of row.

Next row (RS): K11 (12, 13, 15, 18, 20) sts, kfb in next 3 (4, 5, 5, 5, 5) sts—17 (20, 23, 25, 28, 30) sts.

Knit 2 (2, 2, 4, 4, 4) rows.

Next row (WS): K4 (4, 4, 6, 6, 8), p2, *kfb in next st, p2; rep from * to last 2 sts, k2—20 (24, 28, 30, 34, 36) sts.

Continue in established rib and garter pat until foot measures 6 (6¼, 7, 7½, 8, 9) inches.

Next row (RS): K2, [k2, p2tog] 3 (4, 5, 5, 6, 6) times, k6 (6, 6, 8, 8, 10) sts—17 (20, 23, 25, 28, 30) sts.

Knit 3 (3, 3, 5, 5, 5) rows.

Next row (RS): K11 (12, 13, 15, 18, 20) sts, [k2tog] 3 (4, 5, 5, 5, 5) times—14 (16, 18, 20, 23, 25) sts.

Bind off loosely kwise.

Assembly

Fold slipper in half and sew tog in outer loops of sts. Place strap over top and sew button through both strap and slipper on opposite edge. ■



Design by
KATHARINE HUNT

Happy Baby Blankie

Surface texture and cheery colors make this a bright addition to any nursery.

Gauge

24 sts and 35 rows = 4 inches/10cm in Slip St pat.

To save time, take time to check gauge.

Pattern Stitches

Slip St (multiple of 8 sts + 1)

Row 1 (RS): With A, knit across.

Row 2: With A, k1, *p1 wrapping yarn twice, k5, p1 wrapping yarn twice, k1; rep from * across.

Row 3: With B, k1, *sl 1 wyib (dropping extra wrap), k5, sl 1 wyib (dropping extra wrap), k1; rep from * across.

Rows 4 and 6: With B, p1, *sl 1 wyif, p5, sl 1 wyif, p1; rep from * across.

Row 5: With B, k1, *sl 1 wyib, k5, sl 1 wyib, k1; rep from * across.

Row 7: With A, k1, *drop slipped st off



needle to front of work, k2, pick up dropped st and knit it, k1, sl 2, drop next slipped st off needle to front of work, pass 2 sts just slipped back to LH needle, pick up dropped st and knit it, k2, sl 1 wyib; rep from * across, ending last rep with k1 instead of sl 1.

Row 8: With A, k3, *p1, k1, p1, k2, sl 1 wyif, k2; rep from * to last 6 sts, p1, k1, p1, k3.

Row 9: With A, knit across.

Row 10: With A, k3, *p1 wrapping yarn twice, k1, p1 wrapping yarn twice, k5; rep from * to last 3 sts, k3.

Row 11: With B, k3, *sl 1 wyib (dropping extra wrap), k1, sl 1 wyib (dropping extra wrap), k5; rep from * to last 6 sts, sl 1 wyib (dropping extra wrap), k1, sl 1 wyib (dropping extra wrap), k3.

CONTINUED ON PAGE 107



Rows 12 and 14: With B, p3, *sl 1 wyif, p1, sl 1 wyif, p5; rep from * to last 6 sts, sl 1 wyif, p1, sl 1 wyif, p3.

Row 13: With B, k3, *sl 1 wyib, k1, sl 1 wyib, k5; rep from * to last 6 sts, sl 1 wyib, k1, sl 1 wyib, k3.

Row 15: With A, k1, *sl 2, drop next slipped st off needle to front of work, pass 2 sts just slipped back to LH needle, pick up dropped st and knit it, k2, sl 1 wyib, drop next slipped st off needle, k2, pick up dropped st and knit it, k1; rep from * to end.

Row 16: With A, k1, *p1, k2, sl 1 wyif, k2, p1, k1; rep from * across.

Rows 17–32: Rep Rows 1–16.

Rows 33–64: Rep Rows 1–32, substituting C for B.

Rep Rows 1–64 for pat.

Sawtooth Edging (7-st pat, inc to 13 sts, then dec back to 7 sts)

Row 1 (RS): K2, yo, k2tog, yo, k3—8 sts.

Row 2 and all WS rows: Knit across.

Row 3: K2, yo, k2tog, yo, k4—9 sts.

Row 5: K2, yo, k2tog, yo, k5—10 sts.

Row 7: K2, yo, k2tog, yo, k6—11 sts.

Row 9: K2, yo, k2tog, yo, k7—12 sts.

Row 11: K2, yo, k2tog, yo, k8—13 sts.

Row 12: Bind off 6 sts (1 st rem on RH needle), k6—7 sts.

Rep Rows 1–12 rows to desired length, ending with Row 11.

Final bind-off row: Bind off 6 sts (1 st rem on RH needle), k1, turn, k2, turn, bind off rem sts.

Pattern Note

Only 1 yarn is used per row; the color pattern is created by slipping stitches for several rows. The stripes are formed by alternating B and C in series of pattern repeats.

Blanket

Note: Blanket is photographed with pattern upside down.

With A, cast on 145 sts. Knit 2 rows.

Work [Rows 1–64 of Slip St pat] 4 times, and then work [Rows 1–32] once more.

With A, knit 3 rows. Bind off kwise on WS.

Finishing

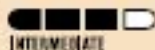
Block to measurements.

Edging

With B, cast on 7 sts.

Work Sawtooth Edging pat until it is long enough to go around outer edges of blanket; leave sts on needle.

With RS facing, using B, beg approx 1½ inches (or length of 1 sawtooth) from corner at lower LH side, sew edging to sides of blanket. Adjust edging length, if necessary, to fit at end. Join ends of edging using Kitchener st, page 109. ■

Skill Level  INTERMEDIATE

Finished Size

Approx 24¼ x 35½ inches
(excluding edging)

Materials


• DK weight yarn* (solids: 161 yds/
50g per ball; variegated: 133 yds/
50g per ball): 4 balls happy days
variegated #88713 (A), 3 balls hot blue
#08742 (B), 2 balls school bus yellow
#024941 (C)



* Sample project was completed in Astra
(100% acrylic) from Patons.

Design by
GEORGE SHAHEEN

Bed of Roses Baby Afghan

Skill Level  EASY

Finished Size

Approx 34 inches across from point to point

Materials

- Medium weight yarn* (364 yds/198g per skein): 1 skein white #311
- Size 13 (9mm) circular needle or size needed to obtain gauge
- 9 (1¼-in-diameter) light pink ribbon roses (optional)



*Sample project was completed with Super Saver (100% acrylic) from Red Heart.

Gauge

12 sts and 16 rows = 4 inches/10cm in St st.

To save time, take time to check gauge.

Pattern Note

Circular needle is used to accommodate large number of stitches. Do not join; work back and forth in rows.

Afghan

Cast on 9 sts, leaving a long tail for sewing.

Row 1 (WS): Purl across.

Row 2 (RS): K1, [yo, k1] 8 times—17 sts.

Row 3 and all WS rows: Purl across.

Row 4: Knit across.

Row 6: K1, [yo, k1] 16 times—33 sts.

Row 8: Knit across.

As pretty as a rose, this round blanket will be both warm and lovely.

Row 10: K1, [yo, k1] 32 times—65 sts.

Row 12: Knit across.

Row 14: P1, *p2tog, [k1, yo] 3 times, k1, p2tog; rep from * 7 more times—73 sts.

Row 16: Knit across.

Row 18: P1, *p2tog, [k1, yo] 4 times, k1, p2tog; rep from * 7 more times—89 sts.

Row 20: Knit across.

Row 22: P1, *p2tog, [k1, yo] 6 times, k1, p2tog; rep from * 7 more times—121 sts.

Row 24: Knit across.

Row 26: P1, *[p2tog] twice, [k1, yo] 6 times, k1, [p2tog] twice; rep from * 7 more times—137 sts.

Row 28: Knit across.

Row 30: P1, *[p2tog] twice, [k1, yo] 8 times, k1, [p2tog] twice; rep from * 7 more times—169 sts.

Row 32: Knit across.

Row 34: P1, *[p2tog] 3 times, [k1, yo] 8 times, k1, [p2tog] 3 times; rep from * 7 more times—185 sts.

Row 36: Knit across.

Row 38: P1, *[p2tog] 3 times, [k1, yo] 10 times, k1, [p2tog] 3 times; rep from * 7 more times—217 sts.

Row 40: Knit across.

Row 42: P1, *[p2tog] 4 times, [k1, yo] 10 times, k1, [p2tog] 4 times; rep from * 7 more times—233 sts.

Row 44: Knit across.

Row 46: P1, *[p2tog] 4 times, [k1, yo] 12 times, k1, [p2tog] 4 times; rep from * 7 more times—265 sts.

Row 48: Knit across.

Row 50: P1, *[p2tog] 5 times, [k1, yo] 12 times, k1, [p2tog] 5 times; rep from * 7 more times—281 sts.

Row 52: Knit across.

Row 54: P1, *[p2tog] 5 times, [k1, yo] 14 times, k1, [p2tog] 5 times; rep from * 7 more times—313 sts.

Rows 56 and 57: Knit across.

Bind off kwise.

Finishing

Weave long end through bottom of cast-on sts, pull sts tight and secure. Sew side edges tog to form circle.

Block to measurements.

If desired, sew 1 rose securely in center and at each point of afghan. ■



Welcome Baby to the world with a wonderfully patterned top-down, raglan-sleeve sweater with matching hat.



Sweater

Gauge

20 sts and 28 rows = 4 inches/10cm in St st.
To save time, take time to check gauge.

Special Abbreviations

Place marker (pm): Place marker on needle.
Slip marker (sm): Slip marker from LH needle to RH needle.
Make 1 (M1): Inc by making backward loop on RH needle.

Designs by
NAZANIN S. FARD

Natural Beauty for Baby

Skill Level ■■■□□
EASY

Sizes

Infant's newborn (6, 12 months)
Instructions are given for smallest size, with larger sizes in parentheses. When only 1 number is given, it applies to all sizes.

Finished Measurements

Chest: 19¼ (23¼, 25¼) inches
Length: 9¾ (11½, 12) inches
Hat circumference: 15 inches

Materials

- Worsted weight yarn* (216 yds/100g per ball): 2 (2, 3) balls soft taupe #0101 1
- Size 6 (4mm) double-point and 29-inch circular needles or size needed to obtain gauge
- Size F/5 (3.75mm) crochet hook
- Stitch markers
- 4 (7/16-inch) buttons



*Sample project was completed with Berella 4 (100% acrylic) from Bernat Yarn Co.

Knit in front and back (kfb): Knit in front and then in back of next st

Pattern Stitch

Lace (multiple of 5 sts)
Row/Rnd 1: *K2tog, k3, yo; rep from * to end.
Row 2 and all even-numbered rows: Purl across.
Rnd 2 and all even-numbered rnds: Knit around.
Row/Rnd 3: *K2tog, k2, yo, k1; rep from * to end.
Row/Rnd 5: *K2tog, k1, yo, k2; rep from * to end.
Row/Rnd 7: *K2tog, yo, k3; rep from * to end.
Row/Rnd 9: *Yo, k3, ssk; rep from * to end.
Row/Rnd 11: *K1, yo, k2, ssk; rep from * to end.
Row/Rnd 13: *K2, yo, k1, ssk; rep from * to end.
Row/Rnd 15: *K3, yo, ssk; rep from * to end.
Row 16: Purl across.
Rnd 16: Knit around.
Rep Rows/Rnds 1–16 for pat.

Pattern Notes

This sweater is worked from the raglan yoke down. The sleeves are worked in the round from the yoke down.
The yoke and lower body are worked back and forth on a circular needle.
A chart for Lace pattern is included for those preferring to work from a chart. When working in rounds, all rows are worked from right to left.

Yoke

Cast on 34 (36, 40) sts. Do not join, work back and forth in rows.
Row 1 (set-up row): Knit across, placing markers as follows: 1 front st, pm, 1 raglan seam st, pm, 6 (5, 7) sleeve sts, pm, 1 raglan seam st, pm, 16 (20, 20) back sts, pm, 1 raglan seam st, pm, 6 (5, 7) sleeve sts, pm, 1 raglan seam st, pm, 1 front st.
Row 2: Purl across.
Row 3 (inc row): *Knit to marker, M1, sm, k1, sm, M1; rep from * 3 times more, knit to end—42, 44, 48 sts.
Row 4: Purl across.
Row 5 (RS): Kfb, *knit to marker, M1,

sm, k1, sm, M1; rep from * 3 times more, knit to last st, kfb—52, 54, 58 sts.

Row 6: Purl across.

Rep [Rows 5 and 6] 2 (3, 4) times—72, 84, 98 sts.

Next row (RS): Cast on 5 (6, 7) sts, *knit to marker, M1, sm, k1, sm, M1; rep from

* 3 times more, knit to end, cast on 5 (6, 7) sts—90, 104, 120 sts.

Next row (WS): K3, purl to last 3 sts, k3.

Rep [Rows 3 and 4] 6 (7, 8) more times, then rep Row 3—146, 168,

192 sts.

At the same time, make buttonhole in right front garter border on first (2nd, 2nd), on 4th (5th, 5th), and then on 7th (8th, 8th) inc row as follows: K1, yo, k2tog.

Body

Next row (WS): Removing markers, k3, p19 (23, 27), slip next 30 (33, 39) sleeve sts to waste yarn, cable cast on (see page 110) 5 (7, 6) underarm sts, p42 (50, 54), slip sleeve sts to waste yarn, cable cast on 5 (7, 6) underarm sts, p19 (23, 27), k3—96, 116, 126 sts.

Next row (RS): K3, work Row 1 of Lace pat to last 3 sts, k3.

Maintaining 3-st garter border, work even in Lace pat until body measures approx 5¾ (7, 7) inches, or ½ inch less than desired length from underarm, ending with Row 8 or 16 of pat.

Knit 6 rows. Bind off all sts loosely.

Sleeves

Pick up and knit 3 sts from underarm, pm for beg of rnd, pick up and knit 2 (4, 3) underarm sts, slip sts from waste yarn to dpns and knit to end of rnd—35 (40, 45) sts.

Continue working Lace pat in rnds until sleeve measures approx 5¾ (7, 8) inches, or ½ inch less than desired length from underarm, ending with Rnd 8 or 16 of pat.

[Knit 1 rnd, purl 1 rnd] 3 times.
Bind off all sts loosely.
Rep for other sleeve.



Tip Off

See Cable cast-on details on page 110.

Finishing

Neck edging

With RS facing, pick up and knit 59 (65, 73) sts around neck edge.

Row 1 (WS): P1, *k1, p1, rep from * across.

Row 2: Knit the knit sts and purl the purl sts across.

Row 3: Work in rib to last 3 sts, p2tog, yo, p1.

Rows 4 and 5: Work in established rib pat.

Bind off very loosely in rib.

Front edging

Note: If not familiar with single crochet (sc) and reverse single crochet (reverse sc), refer to *Crochet Class* on page 108.

Row 1: With RS facing and crochet hook, work 1 row of sc along the right front. Do not turn.

Row 2 (RS): Work reverse sc along the edge. Fasten off.

Rep on left front.

Block to finished measurements.

Sew buttons to left front opposite buttonholes.

Hat

With 2 dpns, cast on 3 sts and work I-cord as follows: *K3, do not turn, slip

sts back to LH needle; rep from * for 15 rows.

Beg working in rnds.

Rnd 1: Kfb of each st. Place 2 sts on each of 3 needles, pm for beg of rnd and join without twisting—6 sts.

Rnd 2 and all even-numbered rnds: Knit around.

Rnd 3: *K1, yo, k1; rep from * around—9 sts.

Rnd 5: *[K1, yo] twice, k1; rep from * around—15 sts.

Rnd 7: *K1, yo, k3, yo, k1; rep from * around—21 sts.

Rnd 9: *K1, yo, k5, yo, k1; rep from * around—

27 sts.

Rnd 11: *Yo, k1, yo, ssk, k3, k2tog, yo, k1; rep from * around—

30 sts.

Rnd 13: *K1, yo, k2, yo, ssk, k1, k2tog, yo, k2, yo; rep from * around—36 sts.

Rnd 15: *K2, yo, k3, yo, sk2p, yo, k3, yo, k1; rep from * around—42 sts.

Rnd 17: *K3, yo, k9, yo, k2; rep from * around—48 sts.

Rnd 19: *K4, yo, k9, yo, k3; rep from * around—54 sts.

Rnd 21: *K5, yo, k9, yo, k4; rep from * around—60 sts.

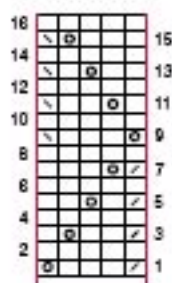


Purl 2 rnds.

Work [Rnds 1–16 of Lace pat] twice.

[Knit 1 rnd, purl 1 rnd] 3 times.

Bind off all sts loosely. Block. ■

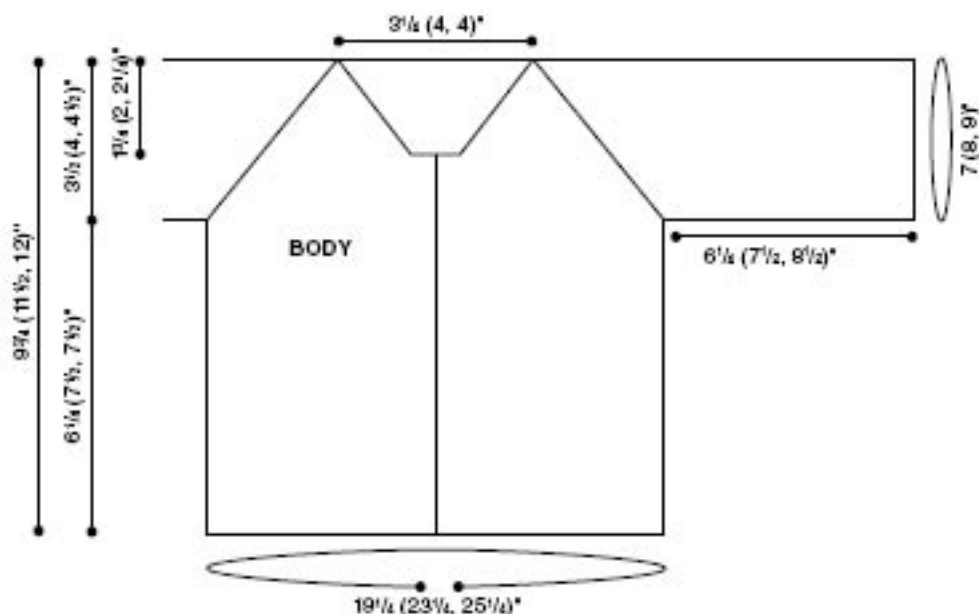


5-st rep
LACE CHART

Note: Sleeve is worked in rnds.
Rep is worked from right to left on all rnds.

STITCH KEY

- K on RS, p on WS
- Yo
- K2tog
- Ssk



We've included the basics here for your reference.

Long-Tail Cast-On

Leaving an end about an inch long for each stitch to be cast on, make a slip knot on the right needle.

Place the thumb and index finger of your left hand between the yarn ends with the long yarn end over your thumb, and the strand from the skein over your index finger. Close your other fingers over the strands to hold them against your palm. Spread your thumb and index fingers apart and draw the yarn into a "V".

Place the needle in front of the strand around your thumb and bring it underneath this strand. Carry the needle over and under the strand on your index finger.

Draw through loop on thumb.

Drop the loop from your thumb and draw up the strand to form a stitch on the needle.

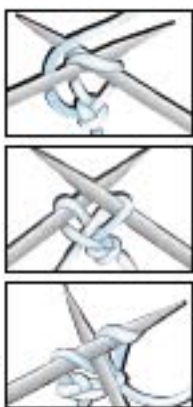
Repeat until you have cast on the number of stitches indicated in the pattern. Remember to count the beginning slip knot as a stitch.



Cable Cast-On

This type of cast-on is used when adding stitches in the middle or at the end of a row.

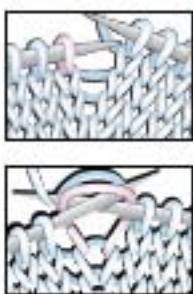
Make a slip knot on the left needle. Knit a stitch in this knot and place it on the left needle. Insert the right needle between the last two stitches on the left needle. Knit a stitch and place it on the left needle. Repeat for each stitch needed.



Knit (k)

Insert tip of right needle from front to back in next stitch on left needle.

Bring yarn under and over the tip of the right needle.



Pull yarn loop through the stitch with right needle point.

Slide the stitch off the left needle. The new stitch is on the right needle.

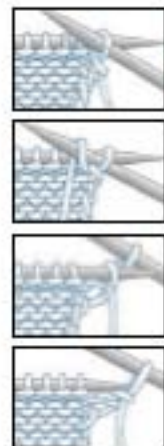


Purl (p)

With yarn in front, insert tip of right needle from back to front through next stitch on the left needle. Bring yarn around the right needle counterclockwise.

With right needle, draw yarn back through the stitch.

Slide the stitch off the left needle. The new stitch is on the right needle.

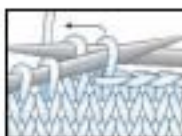


Bind-Off

Binding off (knit)

Knit first two stitches on left needle. Insert tip of left needle into first stitch worked on right needle and pull it over the second stitch and completely off the needle.

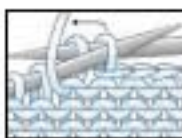
Knit the next stitch and repeat. When one stitch remains on right needle, cut yarn and draw tail through last stitch to fasten off.



Binding off (purl)

Purl first two stitches on left needle. Insert tip of left needle into first stitch worked on right needle and pull it over the second stitch and completely off the needle.

Purl the next stitch and repeat. When one stitch remains on right needle, cut yarn and draw tail through last stitch to fasten off.



Increase (inc)

Two stitches in one stitch Increase (knit)

Knit the next stitch in the usual manner, but don't



remove the stitch from the left needle. Place right needle behind left needle and knit again into the back of the same stitch. Slip original stitch off left needle.

Increase (purl)

Purl the next stitch in the usual manner, but don't remove the stitch from the left needle. Place right needle behind left needle and purl again into the back of the same stitch. Slip original stitch off left needle.

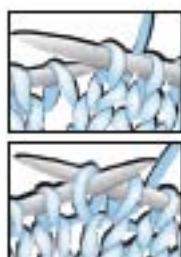


Invisible Increase (M1)

There are several ways to make or increase one stitch.

Make 1 with Left Twist (M1L)

Insert left needle from front to back under the horizontal loop between the last stitch worked and next stitch on left needle.



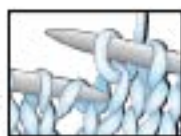
With right needle, knit into the back of this loop.

To make this increase on the purl side, insert left needle in same manner and purl into the back of the loop.



Make 1 with Right Twist (M1R)

Insert left needle from back to front under the horizontal loop between the last stitch worked and next stitch on left needle.



With right needle, knit into the front of this loop.

To make this increase on the purl side, insert left needle in same manner and purl into the front of the loop.



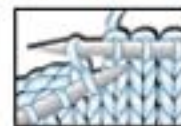
Make 1 with Backward Loop over the right needle

With your thumb, make a loop over the right needle.



Slip the loop from your thumb onto the needle and pull to tighten. Make 1 in top of stitch below. Insert tip of right needle into the stitch on left needle one row below.

Knit this stitch, then knit the stitch on the left needle.



Decrease (dec)

Knit 2 together (k2tog)
Put tip of right needle through next two stitches on left needle as to knit. Knit these two stitches as one.

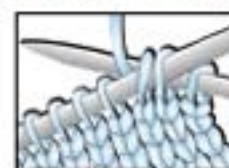


Purl 2 together (p2tog)
Put tip of right needle through next two stitches on left needle as to purl. Purl these two stitches as one.



Slip, Slip, Knit (ssk)

Slip next two stitches, one at a time, as to knit from left needle to right needle. Insert left needle in front of both stitches and work off needle together.



Slip, Slip, Purl (ssp)

Slip next two stitches, one at a time, as to knit from left needle to right needle. Slip these stitches back onto left needle keeping them twisted. Purl these two stitches together through back loops.



Standard Abbreviations

[] work instructions within brackets as many times as directed	k2tog knit 2 stitches together knitwise	sk2p slip 1, knit 2 together, pass slip stitch over the knit 2 together—2 stitches decreased
() work instructions within parentheses in the place directed	LH left hand	sl slip
** repeat instructions following the asterisks as directed	M1 make one stitch	sl 1knitwise slip 1 knitwise
* repeat instructions following the single asterisk as directed	MC main color	sl 1purlwise slip 1 purlwise
inch(es)	mm millimeter(s)	sl st slip stitch(es)
approx approximately	oz ounce(s)	ssk slip, slip, knit
bag begin/begins/beginning	p purl	ssp slip, slip, purl these 2 stitches together
CC contrasting color	pat(s) pattern(s)	st(s) stitch(es)
ch chain stitch	p2tog purl 2 stitches together	St st stockinette stitch
cm centimeter(s)	psso pass slipped stitch over	tbl through back loop(s)
cn cable needle	pwise purlwise	tag together
dec decrease/decreases/decreasing	rem remain/remains/remaining	WS wrong side
dpt(s) double-point needle(s)	rep repeat(s)	wyib with yarn in back
g gram(s)	rev St st reverse	wyif with yarn in front
inc increase/increases/increasing	stockinette stitch	yd(s) yard(s)
k knit	RH right hand	yfwd yarn forward
	rnd(s) rounds	yo (yo's) yarn over(s)
	RS right side	
	skp slip, knit, pass stitch over— one stitch decreased	

Standard Yarn Weight System

Categories of yarn, gauge ranges, and recommended needle sizes

Yarn Weight Symbol & Category Names	0 LACE	1 SUPER FINE	2 FINE	3 LIGHT	4 MEDIUM	5 BULKY	6 SUPER BULKY
Type of Yarns in Category	Fingering, 10-Count Crochet Thread	Sock, Fingering, Baby	Sport, Baby	DK, Light Worsted	Worsted, Afghan, Aran	Chunky, Craft, Rug	Bulky, Roving
Knit Gauge* Ranges in Stockinette Stitch to 4 inches	33-40 sts**	27-32 sts	23-26 sts	21-24 sts	16-20 sts	12-15 sts	6-11 sts
Recommended Needle in Metric Size Range	1.5-2.25mm	2.25-3.25mm	3.25-3.75mm	3.75-4.5mm	4.5-5.5mm	5.5-8mm	8mm
Recommended Needle U.S. Size Range	000 to 1	1 to 3	3 to 5	5 to 7	7 to 9	9 to 11	11 and larger

* GUIDELINES ONLY: The above reflect the most commonly used gauges and needle sizes for specific yarn categories.

** Lace weight yarns are usually knitted on larger needles and hooks to create lace, openwork patterns. Accordingly, a gauge range is difficult to determine. Always follow the gauge stated in your pattern.

Skill Levels

BEGINNER

Projects for first-time knitters using basic knit and purl stitches. Minimal shaping.

EASY

Projects using basic stitches, repetitive stitch patterns, simple color changes, and simple shaping and finishing.

INTERMEDIATE

Projects with a variety of stitches, such as basic cables and lace, simple intarsia, double-point needles and knitting in the round, needle techniques, mid-level shaping and finishing.

EXPERIENCED

Projects using advanced techniques and stitches, such as short rows, Fair Isle, more intricate intarsia, cables, lace patterns and numerous color changes.

Basic Stitches

Garner Stitch

On straight needles knit every row. When working in the round on circular or double-point needles, knit one round then purl one round.

Stockinette Stitch

On straight needles knit right-side rows and purl wrong-side rows. When working on circular or double-point needles, knit all rounds.

Reverse Stockinette Stitch

On straight needles purl right-side rows and knit wrong-side rows. On circular or double-point needles, purl all rounds.

Ribbing

Combines knit and purl stitches within a row to give stretch to the garment. Ribbing is most often used for the lower edge of the front and back, the cuffs and neck edge of garments.

The rib pattern is established on the first row. On subsequent rows the knit stitches are knitted and purl stitches are purled to form the ribs.

Reading Pattern Instructions

Before beginning a pattern, look through it to make sure you are familiar with the abbreviations that are used.

Some patterns may be written for more than one size. In this case the smallest size is given first and others are placed in parentheses. When only one number is given, it applies to all sizes.

You may wish to highlight the numbers for the size you are making before beginning. It is also helpful to place a self-sticking note on the pattern to mark any changes made while working the pattern.

Measuring

To measure pieces, lay them flat on a smooth surface. Take the measurement in the middle of the piece. For example, measure the length to the armhole in the center of the front or back piece, not along the outer edge where the edges tend to curve or roll.

KNITTING NEEDLES CONVERSION CHART

U.S.	0	1	2	3	4	5	6	7	8	9	10	10½	11	13	15
Metric (mm)	2	2¼	2½	3¼	3½	3¾	4	4½	5	5½	6	6½	8	9	10

Gauge

The single most important factor in determining the finished size of a knit item is the gauge. Although not as important for flat, one-piece items, it is important when making a clothing item that needs to fit properly.

It is important to make a stitch-gauge swatch about 4 inches square with recommended patterns and needles before beginning.

Measure the swatch. If the number of stitches and rows are fewer than indicated under "Gauge" in the pattern, your needles are too large. Try another swatch with smaller-size needles. If the number of stitches and rows are more than indicated under "Gauge" in the pattern, your needles are too small. Try another swatch with larger-size needles.

Continue to adjust needles until correct gauge is achieved.

Working From Charts

When working with more than one color in a row, sometimes a chart is provided to follow the pattern. On the chart each square represents one stitch. A key is given indicating the color or stitch represented by each color or symbol in the box.

When working in rows, odd-number rows are usually read from right to left, and even-number rows from left to right.

Odd-number rows represent the right side of the work and are usually knit. Even-number rows represent the wrong side and are usually purled.

When working in rounds, every row on the chart is a right-side row, and is read from right to left.

Use of Zero

In patterns that include various sizes, zeros are sometimes necessary. For example, k0 (0, 1) means if you are making the smallest or middle size, you would do nothing, and if you are making the largest size, you would k1.

Glossary

bind off—used to finish an edge

cast on—process of making foundation stitches used in knitting

decrease—means of reducing the number of stitches in a row

increase—means of adding to the number of stitches in a row

intarsia—method of knitting a multicolored pattern into the fabric

knitwise—insert needle into stitch as if to knit

make 1—method of increasing using the strand between the last stitch worked and the next stitch

place marker—placing a purchased marker or loop of contrasting yarn onto the needle for ease in working a pattern repeat

purled—insert needle into stitch as if to purl

right side—side of garment or piece that will be seen when worn

selvage stitch—edge stitch used to make seaming easier

slip, slip, knit—method of decreasing by moving stitches from left needle to right needle and working them together

slip stitch—an unworked stitch slipped from left needle to right needle, usually as if to purl

wrong side—side that will be inside when garment is worn

work even—continue to work in the pattern as established without working any increases or decreases

work in pattern as established—continue to work following the pattern stitch as it has been set up or established on the needle, working any increases or decreases in such a way that the established pattern remains the same

yarn over—method of increasing by wrapping the yarn over the right needle without working a stitch

KNIT TECHNIQUES

Look here for added information on techniques used in this issue.

Provisional Cast-On

The provisional cast-on has a variety of uses. It starts with a crochet chain on a crochet hook about the same size as the knitting needle. A chart is given below of crochet hooks that correspond most closely to knitting needle sizes.

Crochet Hook	Knitting Needle
E	4
F	5
G	6
H	8
I	9
J	10
K	10½

To work this type of cast-on, start with a crochet chain one or two stitches more than the number of stitches to be cast on for the pattern you are working. If the edge is to be decorative or removed to work in the opposite direction then the chain should be made with a contrasting color.

Once the chain is completed, with a knitting needle, pick up and knit in the back bump of each chain (Photo 1) until the required number

of stitches is on the needle. Continue to work the pattern as given in the instructions.

Some instructions indicate that the provisional cast-on be removed so the piece can be worked in the opposite direction. In this case, hold the work with the cast-on edge at the top. Undo one loop of the crochet chain, inserting the knitting needle into the stitch below the chain. (This stitch is on the original first row of knitting). Continue to undo the crochet chain until all the stitches are on the needle (Photo 2). This provides a row of stitches ready to work in the opposite direction.



3-Needle Bind-Off

Use this technique for seaming two edges together, such as when joining a shoulder seam.

Hold the edge stitches on two separate needles with right sides together.

With a third needle, knit together a stitch from the front needle with one from the back.

Repeat, knitting a stitch from the front needle with one from the back needle once more.

Slip the first stitch over the second. Repeat knitting, a front and back pair of stitches together, then bind one off.



I-Cord

Using 2 double-point needles, cast on (backward loop method) number of sts indicated. Knit, do not turn. Slip sts back to end of needle, knit sts. Repeat to desired length. Thread yarn through sts to end.

Duplicate Stitch

From underneath piece, bring yarn up in the center of the stitch below the stitch to be duplicated.

Place needle from right to left behind both sides of the stitch above the one being duplicated, and pull yarn through (a).

Complete the stitch by returning the needle to where you began (b).



Kitchener Stitch

This method of weaving with two needles is used for the toes of socks and flat seams. To weave the edges together and form an unbroken line of stockinette stitch, divide all stitches evenly onto two knitting needles—one behind the other. Thread yarn into tapestry needle. Hold needles with wrong sides together and work from right to left as follows:

Step 1: Insert tapestry needle into first stitch on front needle as to purl. Draw yarn through stitch, leaving stitch on knitting needle.



Step 2: Insert tapestry needle into the first stitch on the back needle as to purl. Draw yarn through stitch and slip stitch off knitting needle.



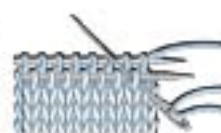
Step 3: Insert tapestry needle into the next stitch on same (back) needle as to knit, leaving stitch on knitting needle.



Step 4: Insert tapestry needle into the first stitch on the front needle as to knit. Draw yarn through stitch and slip stitch off knitting needle.



Step 5: Insert tapestry needle into the next stitch on same (front) needle as to purl. Draw yarn through stitch, leaving stitch on knitting needle.



Repeat Steps 2 through 5 until one stitch is left on each needle. Then repeat Steps 2 and 4. Fasten off. Woven stitches should be the same size as adjacent knitted stitches.